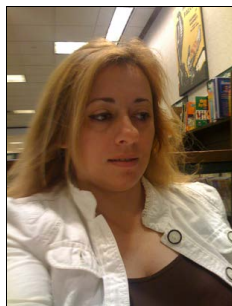




LEYLA ZHUHADAR, PhD.

Menu

Sub-Menu



Leyla Zhuhadar, PhD.

Assistant Professor in Computer Information Systems

LeylaZhuhadar,Ph.D.

2012-2013 Spotlights

- [University Senate Representative for Student Research Council](#), August 2013.
- [Conducting hands-on workshop in the 2013-2014 Student Research Workshop Series: How to visualize your research data using Analytics](#)
- Ongoing research in Business Informatics ([Business Intelligence & Predictive Analytics](#))
- Advised WKU Graduate Research at Columbus State University, GA: "[Transformative Technology Intervention](#)," Oct 25, 2012.
- Presented at LearnLab's Pittsburgh Science of Learning Center, Carnegie Mellon University, Pittsburgh, PA, 2012. [[PDF](#)]
- Nominated as a speaker for the [NSF-sponsored Cyberlearning Research Summit](#) in Washington, D.C., 2012 [[PDF](#)] page 34.




Education

- **Ph.D. in Computer Science and Engineering**, Department of [Computer Engineering and Computer Science](#), University of Louisville, KY, December 2009. [[Advisor: Dr. Olfa Nasraoui](#)]
- **Dissertation Title:** *Automated Discovery, Categorization and Retrieval of Personalized Semantically Enriched E-learning Resources* (**Published:** Amazon/Barnes & Noble).
- **Master's Degree in Computer Science**, Department of [Computer Science](#), Western Kentucky University, KY, August 2004. [[Advisor: Dr. Robert Crawford](#)]

Served in International Conferences as Chair, Co-Chair, Program Committee, Workshop Organizer, and Peer Reviewer

- **Technical Track Chair, Program Committee, Peer Reviewer** in the 25th Annual ACM SAC, [The Semantic Web and Applications \(SWA\)](#), [The 25th Annual ACM Symposium on Applied Computing](#), 22 – 26 March 2010, Sierre, Switzerland.
- **Program Committee, Peer Reviewer** in [The Third IEEE International Conference on Advances in Computer-Human Interactions \(ACHI 2010\)](#), February 10-16, 2010 - St. Maarten, Netherlands Antilles.
- **Program Committee, Peer Reviewer** in [The Second IEEE International Conference on Mobile, Hybrid, and On-line Learning \(eL&mL 2010\)](#), February 10-16, 2010 - St. Maarten, Netherlands Antilles.
- **Program committee, Peer Reviewer** in the [Joint International Workshop on Metamodels, Ontologies, Semantic Technologies, and Information Systems for the Semantic Web \(MOST-ONISW 2009\)](#) at [28th International Conference on Conceptual Modeling \(ER 2009\)](#), Gramado, Brazil, November 9-12, 2009.
- First International Society, NGO (2009) [[Members of Program & Organizing Committee](#)]
- [International Conference on Semantic Web and Web Services \(SWWS 2009\)](#) [[Members of Program & Organizing Committee](#)]
- [Members of Program & Organizing Committee](#) in the [International Conference for the Web Science \(2009\)](#).
- [Members of Program & Organizing Committee](#) in the [International Conference for Open Research \(2009\)](#).
- [Members of Program & Organizing Committee](#) in the [International Conference on Information and Knowledge Engineering \(IKE 2009\)](#).







Journal Publications

- Leyla Zhuhadar, Rong Yang, Miltiadis D., Lytras, *The Impact of Social Multimedia Systems on Cyberlearners*, Special Issue in Computer-Human Interaction, Computers in Human Behavior Journal (Elsevier), Volume 29, Issue 2, March 2013, Pages 378–385.
- Leyla Zhuhadar, Olfa Nasraoui, Robert Wyatt, Rong Yang, *Visual Knowledge Representation of Conceptual Semantic Networks*, *Social Network Analysis and Mining Journal* (Springer), 2011. []
- Leyla Zhuhadar, Olfa Nasraoui, A Hybrid Recommender System Guided by Semantic User Profiles for Search in the E-learning Domain, *JETWI Special issue on Personalization, Reputation and Recommender systems*, *Journal of Emerging Technologies in Web Intelligence (JETWI)*, 2010. []
- Leyla Zhuhadar, Olfa Nasraoui, Robert Wyatt, *Metadata as Seeds for Building an Ontology Driven Information Retrieval System*, *International Journal of Hybrid Intelligent Systems (IOS Press)*, 2009. []

Book Chapter Publications

- Rong Yang, Leyla Zhuhadar, Olfa Nasraoui, "Structural Decompositions of Complex Networks", *Computational Social Networks: Tools, Perspectives and Applications* (Springer: Volume 1), 2012. (available)
- Leyla Zhuhadar, Olfa Nasraoui, Robert Wyatt, "Knowledge Mining for Adaptive Multimedia Web-based Educational Platform", **Book: *Technology Enhanced Learning: Best Practices*, Idea Group, *Editros: Miltiadis D. Lytras (The American College of Greece, Greece), Dragan Gasevic (Athabasca University, Canada), Patricia Ordóñez de Pablos (Universidad de Oviedo, Spain) and Weihong Huang (Kingston University, UK)*, 2008.**

Selected Peer Reviewed Conference Publications

- Leyla Zhuhadar, Rong Yang, "Toward the Design of a Recommender System: Visual Clustering and Detecting Community Structure in a Web Usage Network", *The 2012 IEEE/WIC/ACM International Conferences on Web Intelligence*, China, December, 2012. []
- Leyla Zhuhadar, Rong Yang, *Cyberlearners and Learning Resources*, the *Second International Conference on Learning Analytics and Knowledge (ACM): LAK12*, Canada, 2012.
- Leyla Zhuhadar et al., *Semantically Enriched Recommender Engine: A Novel Collaborative Filtering Approach Using "user-to-user fast XOR bit operation"*, *IEEE International Conference on Semantic Computing (ICSC-10)*, Carnegie Mellon University, USA. [**Best Paper Award**] []
- Leyla Zhuhadar, Olfa Nasraoui, "Personalized Search Based on a User-centered Recommender Engine", *2010 IEEE/WIC/ACM International Conferences on Web Intelligence, Canada*. []
- Leyla Zhuhadar, Olfa Nasraoui, Robert Wyatt, "Automated Discovery, Categorization and Retrieval of Personalized Semantically Enriched E-learning Resources ", *The Third IEEE International Conference on Semantic Computing (ICSC-09)*, **Berkeley, CA, USA** - September 14-16, 2009. [**BibTex**] []
- Leyla Zhuhadar, "Cluster to User Profile Ontology Mapping", *S3T 2009: International Conference on SOFTWARE, SERVICES & SEMANTIC TECHNOLOGIES*, October 28-29, 2009, **Sofia, Bulgaria**. [**Recipient of S3T 2009 Travel Award**]
- Leyla Zhuhadar, Olfa Nasraoui, Robert Wyatt, "Dual Representation of the Semantic User Profile for Personalized Web Search in an Evolving Domain", *Proceedings of the AAAI 2009 Spring Symposium on Social Semantic Web: Where Web 2.0 meets Web 3.0*, 2009, **Stanford University, CA, USA**, 2009. [**BibTex**] [] []
- Leyla Zhuhadar, et al., "Personalized Cluster-based Semantically Enriched Web Search", **CIKM'08: ACM 17th Conference on Information and Knowledge Management**, USA, 2008.

*For complete list of publications, refer to **Bibliography**

Dr. Zhuhadar is the **WKU Senate Representative for Student Research Council**. She works on her post doctoral research in Webmining and Information Retrieval in the **Knowledge Discovery and Webmining Lab** in the Department of Computer Engineering and Computer Science (CECS) at **University of Louisville**. She is the Author of **HyperManyMedia Platform**.

Email: leyla.zhuhadar@wku.edu

Telephone: (270) 745-8774 | Cellphone: (270) 535-8132

Website: <http://people.wku.edu/leyla.zhuhadar>

Author of:

- HyperManyMedia Platform: <http://hmm.wku.edu>
- Accessible Audio/Video Closed-captioning Software: <http://ada-wku.pbworks.com/w/page/1367266/FrontPage>