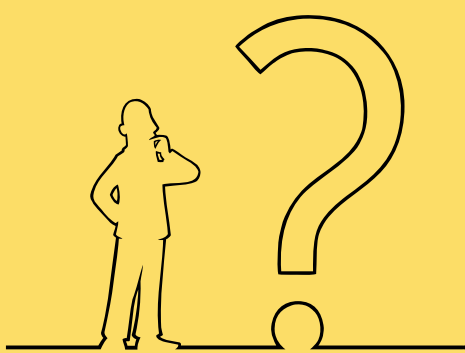




# CLERY ALERT SYSTEM

## A Step By Step Guide



### What is the Clery Act?

The Clery Act is a federal law that mandates universities to report crimes that occur in their jurisdiction.



### What does it mean?

If a crime occurs, WKU evaluates the situation to determine if there is a confirmed significant emergency or dangerous situation that involves an immediate threat to the health or safety of the campus community.



### WKU Alert

If the situation is on/near campus as defined by Clery, an emergency notification is sent via text message. In some cases, email notification or signage on WKU webpages is used.



### Location, location, location

The situation must take place within Clery Geography: on-campus, on-campus residence halls, on a public property connected to campus, on a non-campus property (Greek House).



### Now what?

WKU will continue to monitor and/or investigate the situation to ensure the well-being of all Hilltoppers.



### Learn More

To review the Campus Crime Log, click on this link: [WKU Campus Crime Log](#)



### What can you do?

**YOU** play an important role in our campus safety and can help to prevent crime.

- 1- Check out our safety tips ([Learn More](#))
- 2- Sign up to receive text alerts ([Learn More](#))