

Natural Minor Scales

Notice that each scale uses ONLY the accidentals used in the Key Signature with the same name

Natural minor scales from sharp key signatures in the Bass clef.



a minor (no sharps)

e minor (1 sharp)



b minor (2 sharps)

f# minor (3 sharps)



c# minor (4 sharps)

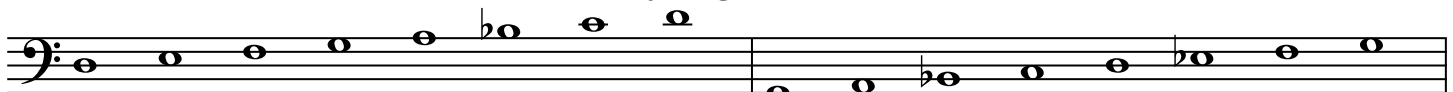
g# minor (5 sharps)



d# minor (6 sharps)

a# minor (7 sharps)

Natural minor scales from flat key signatures in the Bass clef:



d minor (1 flat)

g minor (2 flats)



c minor (3 flats)

f minor (4 flats)



bb minor (5 flats)

eb minor (6 flats)



ab minor (7 flats)