

Physical Therapy
at WKU[®]

Physical Therapy at WKU Executive Summary

As a public university in Kentucky, Western Kentucky University has an obligation to respond to educational, economic and quality of life issues in our service region and throughout the Commonwealth. In 2009 WKU received a challenge gift from a local Physical Therapist to encourage the University to establish a plan to create a Doctor of Physical Therapy program that would serve the growing need for more physical therapists by both health care providers and patients, particularly in south central and western Kentucky.

The results of studies conducted by the Kentucky Hospital Association and the South Central Kentucky Area Health Education Center indicate that there were more than 100 vacant physical therapy positions in western Kentucky in 2009. Data from a 2008 Workforce Kentucky survey show that more than 960 physical therapists will be needed in Kentucky by 2012.

Only two Physical Therapy programs are offered in Kentucky – one at the University of Kentucky and one at Bellarmine University. UK enrolls 48 physical therapy students per year at the Lexington campus and an additional 16 physical therapy students per year at Hazard Community College. As a result of the partnership between UK and Hazard Community College, eastern Kentucky has a smaller shortage of physical therapists than western Kentucky. Bellarmine University enrolls 48 students per year. National data from the Association of Schools and Allied Health Professions indicates that only 33% of qualified applicants are accepted into physical therapy programs because of limited capacity at physical therapy schools across the nation. Kentucky needs to increase its capacity to educate more physical therapists, and, given the greater shortage in western Kentucky, it is imperative that efforts be focused in this region.

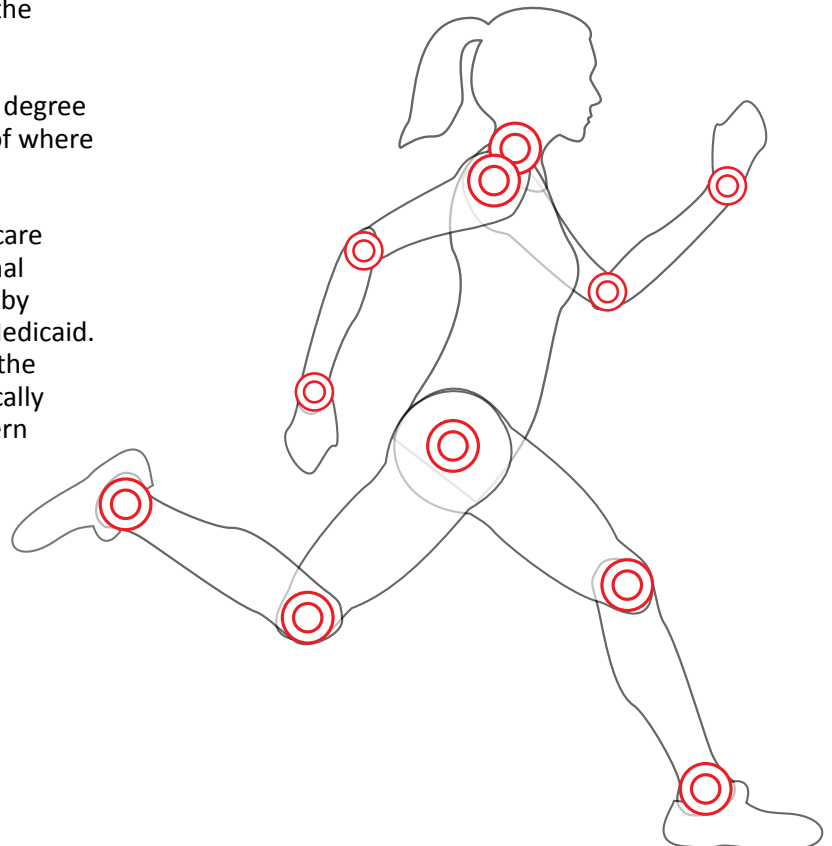
In conjunction with an advisory council of physical therapists and health care providers, WKU has developed a business plan for creating a new Doctor of Physical Therapy program that is based on a self-sustaining financial model. Key stakeholders have contributed \$650,000 to date that would be used to fund startup costs for the program – another \$250,000 is projected to be raised from private sources.

The General Assembly must approve all doctoral programs at Kentucky's comprehensive universities. According to the Southern Association of Colleges and Schools, the accrediting body for WKU, the University is allowed to offer up to three doctoral programs. WKU currently offers a Doctor of Education in Educational Leadership and is in the process of developing a Doctor of Nursing Practice program. WKU is seeking passage of legislation to allow a new Doctor of Physical Therapy program at the University. If approved in 2011, a new professional doctorate program in physical therapy at WKU would enroll 30 students annually beginning in the fall semester of 2012 and would be focused on the needs of rural and underserved areas of western Kentucky.



Professional Doctorate of Physical Therapy Program

- Only two institutions in Kentucky offer physical therapy programs graduating 112 therapists annually: University of Kentucky - 64, Bellarmine University - 48.
- WKU has over 260 students enrolled in Exercise Science and other related disciplines with a pre-physical therapy option who are potential candidates for this degree. Many are enrolled in hopes that this program will be approved.
- The Doctorate of Physical Therapy Program at WKU will be self-sustaining in three years and will require no state appropriated funding for operations or space thanks to private and corporate donations from those who recognize the shortage of physical therapists in the Commonwealth.
- Combined with the present shortage, by 2012 there will be significant additional need for physical therapists in western Kentucky because of increased demand and attrition.
- The closest in-state public institution offering an accredited physical therapy program is five hours away from the western most part of the Commonwealth.
- History has demonstrated that professional degree holders typically practice within 100 miles of where they earned their graduate degree.
- An aging population and the recent health care reform legislation will give 600,000 additional Kentuckians access to health care coverage by 2012, with half of those being eligible for Medicaid. Failing to respond to this need compounds the current physical therapist shortage in medically underserved areas, especially in rural western Kentucky.
- There is a major influx of older Kentuckians becoming eligible for Medicare which, combined with an aging physical therapy workforce, will further exacerbate the shortage of physical therapists practicing in western Kentucky.
- Adding physical therapists within the region significantly impacts the economic growth in Kentucky. Median annual wages of physical therapists in 2001 were \$72,790 with the middle 50% earning between \$60,300 and \$85,540.
- WKU is committed to accepting all qualified applicants, especially those from any colleges and universities in Kentucky.
- WKU will “grow its own” faculty with an existing collaborative Ph.D. program in Rehab Sciences at UK.
- If approved in 2011, a new professional doctorate in physical therapy at WKU would enroll 30 students annually beginning in 2012 and would be focused on the needs of rural and underserved areas of western Kentucky.



Pineville Community Hospital Association, Inc.	Milton Brooks, CEO	Pineville
Kentucky Hospital Research and Education Foundation	Michael T. Rust, FACHE	Louisville
Hopkins County Health Department	Dan A. Martin, MD	Madisonville
Graves Gilbert Clinic	J. Christopher Thorn, CPA, MBA	Bowling Green
Riverside Manor Healthcare Center	Jeffrey Baxley, Executive Director	Calhoun
Barren County Health Care Center	Steve Brown, Administrator	Glasgow
Belle Meade Home	Greg Sparks	Greenville
Medco Center of Paducah	Marilyn Ingram, NHA	Paducah
Sunrise Manor Nursing Home	Daphne Loyall, Administrator	Hodgenville
Graves Gilbert Clinic	Linda Pillow, P.T.	Bowling Green
Colonial Terrace	Denise Lockett, Administrator	Sebree
Fair Oaks Health Systems	Chris Minnich, Administrator	Jamestown
NHC Healthcare	Emogene C. Stephens, Administrator	Glasgow
Metcalfe Health Care Center	Amy Wilson Neighbors, Administrator	Edmonton
Monroe Health & Rehabilitation	Mitzy Payne Cook, Administrator	Tompkinsville
Christian Care Communities	Melanie D. Eaton, CNHA	Bowling Green
The Medical Center	Eric A. Hagan, VP, Administrator	Scottsville
Cumberland County Hospital	Rick Neikirk, CEO	Burkesville
HealthSouth-Lakeview Rehabilitation Hospital	Eileen Nelson, CEO	Elizabethtown
Lourdes - Mercy Health Partners	Steven S. Grinnell, President & CEO	Paducah
Twin Lakes Regional Medical Center	Stephen L. Meredith, CEO	Leitchfield
Southern KY Rehabilitation Hospital	Stuart Locke, CEO	Bowling Green
Crittenden Health Systems	Carl J. Christensen, CEO	Marion
Logan Memorial Hospital	William Haugh, CEO	Russellville
Murray-Calloway County Hospital	Keith Bailey, CEO	Murray
Hardin Memorial Hospital	David L. Gray, President	Elizabethtown
The Medical Center - Franklin	Clara M. Sumner, FACHE - SVP & CEO	Franklin
Owensboro Medical Health System	Jeffrey B. Barber, Ph.D.	Owensboro
Christian Care Communities	Keith R. Knapp, Ph.D. - President & CEO	Louisville
Greenview Regional Hospital	Mark A. Marsh, CEO	Bowling Green
Methodist Hospital	Bruce D. Begley, CEO	Henderson
Muhlenberg Community Hospital	Tracy P. Byers, FACHE - CEO	Greenville
T. J. Samson Community Hospital	Bill Kindred, CEO	Glasgow
Trigg County Hospital	Alisa Coleman, CEO	Cadiz

Contact Information

Tom Pennington, P.T.
 Chair, WKU DPT Committee
 Integrity Rehab Group
 270-842-8824
tom@integrityrehabgroup.com

John Bonaguro, Ph.D.
 WKU College of Health
 and Human Services, Dean
 270-745-7003
john.bonaguro@wku.edu

Robbin Taylor
 WKU
 Vice President for Public Affairs
 270-745-5858
robbin.taylor@wku.edu

The Case for Physical Therapy

Currently, only two institutions in Kentucky offer professional doctorate programs in physical therapy: The University of Kentucky and Bellarmine University. The University of Kentucky's program is offered in the College of Health Sciences and in partnership with the Center for Rural Health in Hazard. Each year, 48 students are enrolled at UK and 16 at the Centre for Rural Health in Hazard. Bellarmine's DPT is offered in the School of Nursing and Health Sciences. The program admits 48 students. According to Association of Schools of Allied Health Professions (ASAHP) in 2008 only 33.9% of qualified applicants were accepted into physical therapy programs. **With 70 programs reporting, there is a ratio of 3 applicants for every seat.** The data from 2008 *Workforce Kentucky* survey show a need for 960 new PT positions in Kentucky by 2012 with a growth rate of 46.5%. The Workforce Kentucky 2010 forecasts to the year 2016 with a growth rate of 29% for Kentucky and a need for 564 physical therapists. The US Bureau of Labor Statistics projects an employment growth rate of 30% for physical therapists from 2008-2018. National data from the Bureau of Labor Statistics, *Occupational Handbook Outlook 2010-11 Edition*, predicts a 30 percent increase in employment growth from 2008 to 2018.

The Kentucky Hospital Association (KHA) *2009 Workforce Shortage Survey* of hospital vacancies supports the need to increase educational programs for physical therapists. The vacancy rate of Physical Therapists was reported at 10 percent, the equivalent of 60 full time physical therapists. The vacancy rate has been consistent over the last five years, with each year showing a need for 12 FTEs in hospital settings. KHA also reports an annual increase in projected staff increases for physical therapy at two percent.

In March 2009, the College of Health and Human Services (CHHS) at Western Kentucky University (WKU) in collaboration with the South Central Area Health Education Center conducted a needs assessment of physical therapy. A survey was sent to 78 physical therapy providers. There was a 48.7% response rate (38 organizations) that showed a current vacancy of 28 physical therapists and a need for 47 new physical therapists in this region by 2013, which represents a growth rate of 43% for new physical therapists in Western Kentucky. Rural areas are faced with significantly higher shortages particularly in western Kentucky's underserved areas. The College is conducting a second needs assessment survey for physical therapy in 48 counties in western Kentucky.

Today there are more than 100 openings for physical therapists in hospital settings in Kentucky, predominantly in western Kentucky. The Kentucky Hospital Association's Kentucky Hospital Research and Education Foundation supports the need for a physical therapy program in western Kentucky to address the shortages and has given \$150,000 for a physical therapy program at WKU. Gifts have been received by Integrity Rehab (\$150,000), Rehabcare (\$250,000), and VIBRA Healthcare (\$100,000). The \$650,000 gifts for a physical therapy program at WKU off-sets the initial start up costs for the program.

On March 23, 2010 the Affordable Health Care Act was passed by Congress. The plan will make coverage affordable for 32 million Americans who are not covered by health insurance today.

Under the plan, 95% of Americans will be insured. In 2014 600,000 Kentucky residents who currently do not have health care coverage will have access to health care, including physical therapy services. Of that amount, 300,000 residents will become eligible for coverage under Kentucky's Medicaid program, a federal-state program that provides reimbursement for health care including physical therapy services. The outlook is a dramatic increase in the need for physical therapists due to health care reform.

Survey

The results of the WKU College of Health and Human Services feasibility survey can be reviewed in its entirety at <http://www.wku.edu/chhs/ptneeds> or for additional information, please contact Jennifer Smith at 270-745-6824 or Jennifer.breiwsmith@wku.edu.

Economic Impact

Median annual wages of physical therapists were \$72,790 in May 2008. The middle 50 percent earned between \$60,300 and \$85,540. The lowest 10% earned less than \$50,350, and the highest 10% earned more than \$104,350. The following chart shows median annual wages in the industries employing the largest numbers of physical therapists in May 2008:

Home health care services	\$77,630
Nursing care facilities	\$76,680
General medical and surgical hospitals	\$73,270
Offices of physicians	\$72,790
Offices of other health practitioners	\$71,400

WKU's offering of a physical therapy program will significantly impact the economic stimulus in Kentucky. The national median income of physical therapists is \$72,790.

The Plan

The American Physical Therapy Association requires new programs seeking accreditation to employ a full-time Physical Therapy Director to develop the curriculum and recruit faculty. In addition, APTA strongly recommends hiring an academic clinical coordinator during the initial year of program development. During the developmental stages for accreditation, there are no students enrolled and no tuition revenue to offset the cost to implement the program. Given the current financial situation in higher education, there are no new funds available for start-up costs for the program. WKU has raised \$650,000 in private funding by key stakeholders that will enable the University to hire a program director, academic clinical coordinator and office associate for the program. WKU is seeking approval from the Kentucky General Assembly for

legislative authority to offer a clinical doctorate program in physical therapy. If approved in the 2011 legislative session, WKU will then work with CPE for approval of the program and once approved hire the necessary personnel to implement the program. The goal is to enroll WKU's first class of physical therapists in Fall 2012.

Grow Our Own

WKU currently has 201 students enrolled in the pre-physical therapy option who are prospects for this degree. The majority of these students are pursuing degrees in Exercise Science and Biology. Many enrolled at WKU in hopes of this degree being authorized. WKU will commit to accepting qualified physical therapy program applicants from any Kentucky university. The pricing of degree programs at private universities suggests that most graduates of Kentucky universities will attend either UK or WKU.

Program Description

The Department of Physical Therapy in CHHS at WKU will accept a new class of 30 students each year for a total of 90 students in the 3-year professional Doctor of Physical Therapy curriculum. The new cohort enters in the summer term and continues for nine consecutive semesters, including three summers. The applied clinical research sequence of courses begins in the fourth semester (second year) and concludes in the sixth semester with a public defense of a clinically oriented research project about physical therapy practice. Students are supervised throughout the three years by a cadre of eight full-time physical therapy faculty plus two or three part-time faculty members.

Budget

The proposed business plan includes budget projections based on 2010-2011 tuition costs. The first year is fully supported by external funding sources of \$650,000. Our goal is to reach \$1,000,000 in private gifts by July 2012 when a full-time director, full-time academic clinical coordinator and office associate are hired. The WKU budget is built on an annualized tuition for the professional doctorate tuition for Kentucky residents for fall, spring and summer semesters. The University of Kentucky's tuition for professional doctorate in physical therapy for 2010-2011 is \$15,116 for residents and \$33,050 for non-residents (www.uky.edu/Registrar/feesgen.htm). WKU estimates tuition costs for the professional doctorate in physical therapy in Fall 2012 by using the base funding of UK for 2010-2011 of \$15,116, and adding 4% per year for 2011-2012, and 2012-2103 for an estimated total of \$16,350. The projected budget below demonstrates that the professional doctorate in physical therapy is self-sustaining and does not require funding from the Commonwealth of Kentucky or base funding from WKU. The budget is based upon in-state tuition for the entire class.

Budget*

	FY 2011-2012	FY2012-2013	2013-2014	2014-2015	Assumptions
Students	Start Up	30	60	90	
	Year				
WKU Projected Tuition		\$16,350	\$17,004	\$17,684	4% increase in tuition
Total Fall Spring		\$490,500	\$1,020,240	\$1,591,574	
Costs	FY2011-2012	FY2012-2013	2013-2014	2014-2015	
	Year 1	Year 2	Year 3	Year 4	
Director	\$110,000	\$114,400	\$118,976	\$123,735	4% salary increments
Clinical Coordinator	\$80,000	\$83,200	\$86,528	\$89,989	
Office Associate	\$25,000	\$26,000	\$27,040	\$28,122	
Total Salaries	\$215,000	\$223,600	\$232,544	\$241,846	
Benefits (33.88%)	\$72,842	\$75,756	\$78,786	\$81,937	
Faculty (2)		\$130,000	\$135,200	\$140,608	Average Salary \$65,000
Benefits		\$44,044	\$45,806	\$47,638	
Faculty (2)			\$130,000	\$135,200	Average Salary \$65,000
			\$44,044	\$45,806	
Faculty (2)				\$130,000	Average Salary \$65,000
Benefits				\$44,044	
Part-time Faculty Needs		\$10,000	\$15,000	\$20,000	
Equipment	\$300,000				
Operating	\$10,000	\$15,000	\$20,000	\$25,000	
Facility Lease		\$405,000	\$405,000	\$405,000	13,500 square feet @ \$30 per square foot
Total	\$597,842	\$903,400	\$932,336	\$962,029	
Fund Raising	\$650,000	\$500,000			
Net		\$87,100	\$87,904	\$629,545	

*Based on all in-state enrollment

Tuition and Fees for Professional Doctorate in Physical Therapy at Other Institutions

The tuition and fees at other physical therapy programs in Kentucky, Tennessee and Indiana are summarized below:

Bellarmino (Louisville)

\$33,000 per year-summer, fall and spring- before fees.

Students will also be charged a comprehensive fee of \$35 per course that includes Student Activities, Technology, printing allowance, parking, drop/add, and transcript fees. Students also will be responsible for any course fees (as printed in the course schedule), professional fees, and books.

Belmont (Tennessee)

3 year program, Graduate physical therapy tuition is \$12,720.00 per semester graduate student fees is \$265.00 per semester, for a total of \$25,970 per year for fall, spring, and summer.

University of Evansville (Indiana)

3 year program, 8 week summer term listed for all 3 years. Tuition is listed annually- includes fall and spring tuition. Summer tuition is charged per credit hour= \$380.00 per hour.

Summer 1- 7 hours

Summer 2- 5 hours

Summer 3- 5 hours

Physical therapy tuition for the 2009/2010 academic year: \$26,010.00 Registration and/or Activity Fees are \$800.00 fees and program fees of \$150.00 annually (manuals, lab fees, cost for background checks, etc.). Plus the summer fees of \$2,660 first year, \$1,900 second year and \$1,900 for third year. This equates to: Annual tuition and fees of \$26,960 per year for fall and spring, plus \$2,660 for summer equals \$29,620 tuition for the first year of the program.

The projected tuition for professional doctorate in physical therapy at WKU of \$16,350 is reasonable and affordable in comparison to other universities in Kentucky and surrounding states.



Quality Care For Southeast Kentucky

Telephone
(606) 337-3051

J. Milton Brooks, III
Administrator

Pineville Community Hospital Association, Inc.

850 Riverview Avenue
Pineville, Kentucky 40977

October 19, 2010

Dr. Gary Ransdell
President
Western Kentucky University
1906 College Heights Blvd.
Wetherby Administration Building
Bowling Green, KY 42101



President Ransdell:

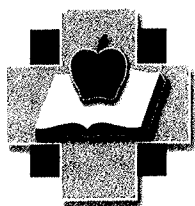
I am writing to request your support for implementing a doctorate in physical therapy (DPT) program at Western Kentucky University.

There is a need to provide additional educational opportunities for physical therapy to meet the demand for increased physical therapy services. Currently, only two institutions in Kentucky offer physical therapy programs: The University of Kentucky and Bella mine University. Data from the Bureau of Labor Statistics show a need for 960 new PT positions in Kentucky by 2012. Kentucky Hospital Association 2009 Workforce Shortage Survey reports a 10% vacancy rate that has not changed in the last five years. With only two universities graduating approximately 100 students per year, the Commonwealth of Kentucky will not be able to meet the critical shortage of physical therapists.

I urge you to support the implementing DPT at WKU. A physical therapy program at WKU will address the needs in western Kentucky and the Commonwealth. I look forward to your reply.

Sincerely,
PINEVILLE COMMUNITY HOSPITAL
ASSOCIATION, INCORPORATED

Milton Brooks
CEO



KENTUCKY HOSPITAL RESEARCH AND EDUCATION FOUNDATION

July 6, 2010



Gary A. Ransdell
President
Western Kentucky University
1906 College Heights Boulevard, #11001
Bowling Green, Kentucky 42101-1001

Dear ^{Gary}Dr. Ransdell:

The Kentucky Hospital Research and Education is pleased to endorse the establishment of the Doctorate in Physical Therapy Program underway at Western Kentucky University. The Workforce Shortage Survey we conduct annually indicates a continuing need for physical therapy, particularly in Western Kentucky.

We look forward to working with you and your staff as this program gets underway and to completing our financial support for the program as previously approved by the KHREF Board of Directors.

Sincerely,

Michael T. Rust, FACHE
President



HOPKINS COUNTY HEALTH DEPARTMENT

412 North Kentucky Ave. P.O. Box 1266
Madisonville, Ky. 42431 • (270) 821-5242 Telephone
• (270) 825-0138 Fax

April 6, 2010

Dr. Gary Ransdell
President, Western Kentucky University
1806 College Heights Blvd.
Wetherby Administration Building
Bowling Green, KY 42101



Dear Dr. Ransdell,

I am sorry to be this late in offering support for the DPT program at WKU, but personal difficulties have prevented my being timely, and I hope it is not too late.

It is known by both surveys as well as anecdotally that there is a continuing shortage of physical therapists throughout Kentucky and particularly in Western Kentucky. In our area, physical therapy positions have been vacant for an extended period of time and the need for physical therapists is only partly filled by the Physical Therapy Assistant program at Madisonville Community College. The MCC program should work well in tandem with a PT program at WKU.

I hope it will be possible to initiate this much needed profession and look forward to positive results in the near future.

Sincerely,

Dan A. Martin, MD

cc: Dr. John Bonaguro

DM/eb



ALLERGY & IMMUNOLOGY
DIANA K. CAVANAH, M.D.
PATRICIA J. MERCER, M.D.
THOMAS G. STERNBERG, M.D.

CARDIOLOGY
WILLIAM E. HARSTON, JR., M.D.
ALLAN H. PRIBBLE, M.D.
CHARLES S. LIN, M.D.
KENNETH L. GIBBS, M.D.

DERMATOLOGY
JO ANN D. JONES, M.D.
CLEMENS ESCHÉ, M.D.

ENDOCRINOLOGY
DAVID I. SHADOWEN, M.D.
PAUL B. COFOID, M.D.
GARY L. MUELLER, M.D.

FAMILY MEDICINE
JACK G. GLASSER, M.D.
WILLIAM R. HARRIGAN, M.D.
D. G. MASTRONARDI, M.D.
CRAIG A. LOSEKAMP, M.D.
DAVID C. NAPIER, M.D.

FAMILY MEDICINE & SPORTS MEDICINE
BRIAN K. MACY, M.D.
FARHAN J. MALIK, M.D.

GASTROENTEROLOGY
DONALD RAUH, M.D.
ROBERT J. EMSLIE, M.D.

INTERNAL MEDICINE
J. T. GILBERT, M.D. 1910-2001
NAVINIT C. DOSHI, M.D.
WAYNE HENDRIX, M.D.
GARY L. VERST, M.D.
SHERRYLL B. REED, M.D.
RANCE R. WENTWORTH, M.D.
HOPE HAVENER, M.D.
NIRAV A. SHETHI, M.D.
GERARDO E. ARNAEZ, M.D.

NEUROLOGY
JIANHUA ZHU, M.D. Ph.D.
WESLEY H. CHOU, M.D.
PAUL F. BURKE, M.D.

OBSTETRICS & GYNECOLOGY
JOSEPH C. GASS, M.D.
TODD A. DREXEL, D.O., M.P.H.
SARA L. MANGOLD, M.D.

ONCOLOGY & HEMATOLOGY
STEVEN W. SMITH, M.D.
THOMAS J. YOUNG, M.D.
SRIVIDYALAKSHMI (VIDYA) SESHADRI, M.D.

OPHTHALMOLOGY
JENNIFER S. WENTWORTH, M.D., F.A.C.S.
MARC A. MOORE, M.D.

ORTHOPEDIC SURGERY
MARK E. BUCHANAN, M.D.

OTORHINOLARYNGOLOGY
JAMES L. SALMON, JR., M.D.

PATHOLOGY
JACQUELINE GRANESE, M.D.

PEDIATRIC MEDICINE
DEBRA R. SOWELL, M.D.
PIPPA PINCKLEY-STEWART, M.D.
PATRICIA G. FAULKNER-SIMMONS, M.D.
MARK LOWRY, III, M.D.
CHRISTOPHER J. CASTELLI, M.D.
BRENT T. BAKER, M.D.

PULMONARY & SLEEP MEDICINE
DOUGLAS B. THOMSON, M.D., M.P.H.
J. RANDALL HANSBROUGH, M.D. Ph.D.

RADIOLOGY

RHEUMATOLOGY
ASAD D. FRASER, M.D.
NEHA A. PANSURIA, M.D.

SLEEP MEDICINE
MICHAEL J. ZACHEK, M.D.

SURGERY
G. Y. GRAVES, M.D. 1903-1967
WILLIAM F. M. DANIEL, M.D., F.A.C.S.
TIMOTHY A. WIERSON, M.D.
TAGE HAASE, M.D.

UROLOGY
MARK E. BIGLER, M.D.
DAVID A. BERGAMINI, M.D.
JONATHAN M. MOBLEY, M.D.
MATTHEW E. RUTTER, M.D.
SAMER R. KALAKISH, M.D.

ADMINISTRATION
J. CHRISTOPHER THORN, CPA, M.B.A.
STEVEN K. SINCLAIR, CPA, CMPE
CRAIG HECKMAN, J.D.
DEBBIE DIAMOND, SPIR

March 12, 2010

Dr. Gary Ransdell
President
Western Kentucky University
1906 College Heights Blvd
Wetherby Administration Building
Bowling Green, KY 42101

President Ransdell:

I am writing to request your support for implementing a doctorate in physical therapy (DPT) program at Western Kentucky University.

There is a need to provide additional educational opportunities for physical therapy to meet the demand for increased physical therapy services. Currently, only two institutions in Kentucky offer physical therapy programs: The University of Kentucky and Bellarmine University. Data from the Bureau of Labor Statistics show a need for 960 new PT positions in Kentucky by 2012. Kentucky Hospital Association 2009 Workforce Shortage Survey reports a 10% vacancy rate that has not changed in the last five years. With only two universities graduating approximately 100 students per year, the Commonwealth of Kentucky will not be able to meet the critical shortage of physical therapists.

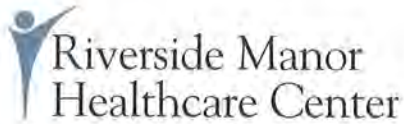
Graves-Gilbert Clinic, established in 1937, is a multi-specialty medical group that continues to grow to meet the health care needs of Bowling Green and South Central Kentucky. Our goal has always been to provide sensitive, compassionate care to our patients with respect to the total well being of the individual. Physical Therapy is a service offered by our Clinic, and graduates from a local program would be a tremendous asset.

I urge you to support the implementing DPT at WKU. A physical therapy program at WKU will address the needs in western Kentucky and the Commonwealth. I look forward to your reply.

Sincerely,

J. Christopher Thorn, CPA, MBA
Chief Executive Officer

Main Clinic: 201 Park Street • P.O. Box 90007 • Bowling Green, KY 42102 • Phone (270) 781-5111
Riverside Professional Building: 825 2nd Avenue • Bowling Green, KY 42101 • Phone (270) 781-5111
Medical Arts Building: 350 Park Street • Bowling Green, KY 42101 • Phone (270) 781-5111
Glasgow Office: 102 Physicians Boulevard • Glasgow, KY 42141 • (270) 651-1082
Fax: (270) 780-0498 • www.ggclinic.com



A Kindred Community

March 12, 2010

Dr. Gary Ransdell
President
Western Kentucky University
1906 College Heights Blvd.
Wetherby Administration Building
Bowling Green, KY 42101

President Ransdell:

I am writing to request your support for implementing a doctorate in physical therapy (DPT) program at Western Kentucky University.

There is need to provide additional educational opportunities for physical therapy to meet the demand for increased physical therapy services. Currently, only two institutions in Kentucky offer physical therapy programs: The University of Kentucky and Bellarmine University. Data from the Bureau of Labor Statistics show a need for 960 new PT positions in Kentucky by 2012. Kentucky Hospital Association 2009 Workforce Shortage Survey reports a 10% vacancy rate that has not changed in the last five years. With only two universities graduating approximately 100 students per year, the Commonwealth of Kentucky will not be able to meet the critical shortage of physical therapists.

I urge you to support the implementing DPT at WKU. A physical therapy program at WKU will address the needs in western Kentucky and the Commonwealth. I look forward to your reply.

Sincerely,

Jeffrey Baxley
Executive Director

A handwritten signature in black ink that reads "Jeffrey Baxley".

Phone 270/651-9131
Web site: www.glasgowbche.com

Barren County Health Care Center
Skilled - Rehabilitation Services
300 Westwood Street – Glasgow, KY 42141

3/11/10

Dr. Gary Ransdell
President
Western Kentucky University
1906 College Heights Blvd.
Wetherby Administration Building
Bowling Green, KY 42101

President Ransdell:

I am writing to request your support for implementing a doctorate in physical therapy (DPT) program at Western Kentucky University.

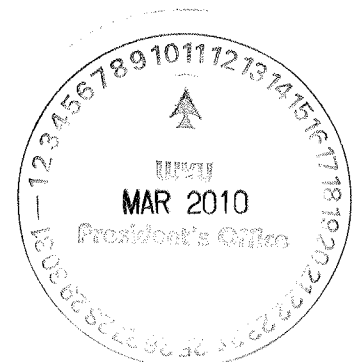
There is a need to provide additional educational opportunities for physical therapy to meet the demand for increased physical therapy services. Currently, only two institutions in Kentucky offer physical therapy programs: The University of Kentucky and Bellarmine University. Data from the Bureau of Labor Statistics show a need for 960 new PT positions in Kentucky by 2012. Kentucky Hospital Association 2009 Workforce Shortage Survey reports a 10% vacancy rate that has not changed in the last five years. With only two universities graduating approximately 100 students per year, the Commonwealth of Kentucky will not be able to meet the critical shortage of physical therapists.

I urge you to support the implementing DPT at WKU. A physical therapy program at WKU will address the needs in western Kentucky and the Commonwealth. I look forward to your reply.

Sincerely,



Steve Brown
Administrator



Belle Meade Home
521 Green Drive
Greenville, KY 42345

March 10th, 2010



Dr. Gary Ransdell
President
Western Kentucky University
1906 College Heights Blvd.
Wetherby Administration Building
Bowling Green, KY 42101

President Ransdell:

I am writing to request your support for implementing a doctorate in physical therapy (DPT) program at Western Kentucky University.

There is a need to provide additional educational opportunities for physical therapy to meet the demand for increased physical therapy services. Currently, only two institutions in Kentucky offer physical therapy programs: The University of Kentucky and Bellarmine University. Data from the Bureau of Labor Statistics show a need for 960 new PT positions in Kentucky by 2012. Kentucky Hospital Association 2009 Workforce Shortage Survey reports a 10% vacancy rate that has not changed in the last five years. With only two universities graduating approximately 100 students per year, the Commonwealth of Kentucky will not be able to meet the critical shortage of physical therapists.

As a administrator of a rural community nursing home, I definitely have first hand knowledge of how difficult it is in finding Physical Therapists to staff my facility. Physical Therapists are few and far between and I feel that if there was a DPT program offered at Western Kentucky University then it would allow residents from our community to explore that option resulting in a growth of Physical Therapists.

I urge you to support the implementing DPT and WKU. A physical therapy program at WKU will address the needs in western Kentucky and the Commonwealth. I look forward to your reply.

Sincerely,

A handwritten signature in blue ink is located below the "Sincerely," text. The signature is stylized and appears to read "Greg Sparks".

Greg Sparks

Medco Center of Paducah

A NURSING AND REHABILITATION CENTER

March 9, 2010

Dr. Gary Ransdell
President
Western Kentucky University
1906 College Heights Blvd.
Wetherby Administration Building
Bowling Green, KY 42101

President Ransdell:

I am writing to request your support for implementing a doctorate in Physical therapy (DPT) program at Western Kentucky University.

There is a need to provide additional educational opportunities for physical therapy to meet the demand for increased physical therapy services. Currently, only two institutions in Kentucky offer Physical Therapy programs: The University of Kentucky and Bellarmine University. Data from the Bureau for Labor Statistics show a need for 960 new PT positions in Kentucky by 2012. Kentucky Hospital Association 2009 Workforce Shortage Survey reports a 10% vacancy rate that has not changed in the past five years. With only two universities graduating approximately 100 students per year, the Commonwealth of Kentucky will not be able to meet the critical shortage of physical therapists.

At our facility, we have had a full time opening for a physical therapist that we have not be able to fill for over a year. We are using physical therapists that are working PRN at several facilities for evaluations with treatments being provided by Physical Therapy assistants.

I urge you to support the implementing DPT at WKU. A physical therapy program at WKU will address the needs in western Kentucky and the Commonwealth. I look for to your reply.

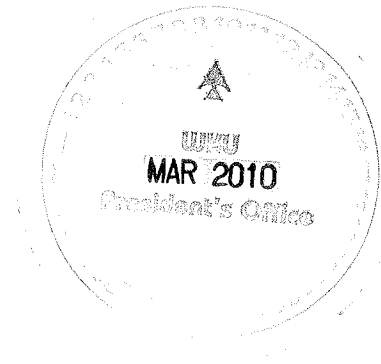
Sincerely



Marilyn Ingram NHA
Administrator

Sunrise Manor Nursing Home
80 Phillips Lane
Hodgenville, KY 42748

March 8, 2010



Dr. Gary Ransdell
President
Western Kentucky University
1906 College Heights Blvd.
Wetherby Administration Building
Bowling Green, KY 42101

President Ransdell:

I am writing to request your support for implementing a doctorate in physical therapy (DPT) program at Western Kentucky University.

There is a need to provide additional education opportunities for physical therapy to meet the demand for increased physical therapy services. Currently, only two institutions in Kentucky offer physical therapy programs: The University of Kentucky and Bellarmine University. Data from the Bureau of Labor Statistics show a need for 960 new PT positions in Kentucky by 2012. Kentucky Hospital Association 2009 Workforce Shortage Survey reports a 10% vacancy rate that has not changed in the last five years. With only two universities graduating approximately 100 students per year, the Commonwealth of Kentucky will not be able to meet the critical shortage of physical therapists.

The shortage of physical therapist in rural areas is even more critical, as opposed to the shortage in metropolitan areas.

I urge you to support the implementing DPT at WKU. A physical therapy program at WKU will address the needs in western Kentucky and the Commonwealth. I look forward to your reply.

Sincerely,

A handwritten signature in black ink that reads "Daphne Loyall, Admin". The signature is written in a cursive style.

Daphne Loyall
Administrator



ALLERGY & IMMUNOLOGY
DIANA K. CAVANAH, M.D.
PATRICIA J. MERCER, M.D.

CARDIOLOGY
WILLIAM E. HARSTON, JR., M.D.
ALLAN H. PRIBBLE, M.D.
CHARLES S. LIN, M.D.

DERMATOLOGY
JO ANN D. JONES, M.D.

ENDOCRINOLOGY
DAVID I. SHADOWEN, M.D.
PAUL B. COFOID, M.D.
GARY L. MUELLER, M.D.

FAMILY MEDICINE
M. JAMES GAFFNEY, M.D.
JACK G. GLASSER, M.D.
WILLIAM R. HARRIGAN, M.D.
D. G. MASTRONARDI, M.D.
CRAIG A. LOSEKAMP, M.D.

GASTROENTEROLOGY
DONALD RAUH, M.D.
ROBERT J. EMSLIE, M.D.

INTERNAL MEDICINE
J. T. GILBERT, M.D. 1910-2001
WILLIAM B. RUSSELL, M.D.
NAVNET C. DOSHI, M.D.
WAYNE HENDRIX, M.D.
GARY L. VERST, M.D.
SHERRY L. B. REED, M.D.
RANCE R. WENTWORTH, M.D.
HOPE HAVENER, M.D.
NIRAV A. SHETH, M.D.

NEUROLOGY
JIANHUA ZHU, M.D. Ph.D.
WESLEY H. CHOU, M.D.

OBSTETRICS & GYNECOLOGY
RANDY A. MCCOOL, M.D.
JOSEPH C. GASS, M.D.
TODD A. DREXEL, D.O., M.P.H.

ONCOLOGY & HEMATOLOGY
JANE R. BRAMHAM, M.D.
STEVEN W. SMITH, M.D.
THOMAS J. YOUNG, M.D.
CHRISTOPHER BRADEN, D.O.
PHILOMENA M. COLUCCI, M.S., D.O.

OPHTHALMOLOGY
JENNIFER S. WENTWORTH, M.D., F.A.C.S.
RANDAL H. PAUL, M.D.

OTORHINOLARYNGOLOGY
JAMES L. SALMON, JR., M.D.

PEDIATRIC MEDICINE
DEBRA R. SOWELL, M.D.
PIPPA PINCKLEY-STEWART, M.D.
JOSEPH D. POTZICK, M.D.
PATRICIA G. FAULKNER-SIMMONS, M.D.
MARK LOWRY, III, M.D.
CHRISTOPHER J. CASTELLI, M.D.

PULMONARY MEDICINE
MICHAEL J. ZACHEK, M.D.
DOUGLAS B. THOMSON, M.D., M.P.H.
J. RANDALL HANSBROUGH, M.D. Ph.D.
CARYL ANN SIKORA, M.D.

RADIOLOGY

RHEUMATOLOGY
ASAD D. FRASER, M.D.

SURGERY
G. Y. GRAVES, M.D. 1903-1967
WILLIAM F. M. DANIEL, M.D., F.A.C.S.
TIMOTHY A. WIERSON, M.D.
TAGE HAASE, M.D.

UROLOGY
MARK E. BIGLER, M.D.
DAVID A. BERGAMINI, M.D.
JONATHAN M. MOBLEY, M.D.

ADMINISTRATION
J. CHRISTOPHER THORN, CPA, M.B.A.
STEVEN K. SINCLAIR, CPA, CMPE
CRAIG HECKMAN, J.D.
DEBBIE DIAMOND, SPIR

Linda Belle Pillow, P.T.
Graves Gilbert Clinic Physical Therapy
201 Park Street
Bowling Green, KY 42101

Dr. Gary Ransdell
President
Western Kentucky University
1906 College Heights Blvd.
Wetherby Administration Building
Bowling Green, KY 42101

March 5, 2010

Dear Gary,

I am writing to request your support for implementing a doctorate in physical therapy (DPT) program at Western Kentucky University.

There is a need to provide additional educational opportunities for physical therapy to meet the demand for increased physical therapy services. Currently only two institutions in Kentucky offer physical therapy programs: The University of Kentucky and Bellarmine University. Data from the Bureau of Labor Statistics show a need for 960 new PT positions in Kentucky by 2012. Kentucky Hospital Association 2009 Workforce Shortage Survey reports a 10% vacancy rate that has not changed in the last five years. With only two universities graduating approximately 100 students per year, the Commonwealth of Kentucky will not be able to meet the critical shortage of physical therapists.

Gary, I have been a PT in Bowling Green for 22 years. I have spent on average 1 year looking for each PT that I have hired using head hunters. That is way too long and time intensive to spend on looking for physical therapists. Our patients and staff suffer from this lack of staff. There is a huge need for more PTs in Bowling Green and the Kentucky area.

I would like to be on the steering committee if possible. I will call you about this.

I urge you to support the implementation of DPT at WKU. A physical therapy program at WKU will address the needs in western Kentucky and the Commonwealth. I look forward to your reply.

Sincerely,

Linda Pillow P.T.





142 Roger Powell Road
Sebree, Kentucky 42455

Phone (270) 835-2533
Fax: (270) 835-9904

Colonial Terrace
142 Roger Powell Road
Sebree, KY 42455



March 4, 2010

Dr. Gary Ransdell, President
Western Kentucky University
1906 College Heights Blvd.
Wetherby Administration Building
Bowling Green, KY 42101

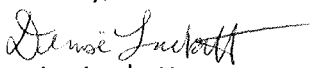
President Ransdell:

I am writing to request your support for implementing a doctorate in physical therapy (DPT) program at Western Kentucky University.

There is a need to provide additional educational opportunities for physical therapy to meet the demand for increased physical therapy services. Currently, only two institutions in Kentucky offer physical therapy programs. Data from the Bureau of Labor Statistics show a need for 960 new PT positions in Kentucky by 2012. Kentucky Hospital Association 2009 Workforce Shortage Survey reports a 10% vacancy rate that has not changed in the last five years. With only two universities graduating approximately 100 students per year, the Commonwealth of Kentucky will not be able to meet the critical shortage of physical therapists.

I urge you to support the implementing DPT at WKU. A physical therapy program at WKU will address the needs in Western Kentucky and the Commonwealth.

Sincerely,


Denise Lockett
Administrator



Fair Oaks Health Systems

*P.O. Box 740
Fair Oaks Drive
Jamestown, Kentucky 42629*

Mr. Chris Minnich, Administrator
Fair Oaks Health Systems, LLC
PO Box 740
Jamestown, KY 42629



March 3, 2010

Dr Gary Ransdell
President
Western Kentucky University
1906 College Heights Blvd.
Wetherby Administration Building
Bowling Green, KY 42101

President Ransdell:

I am writing to request your support for implementing a doctorate in physical therapy (DPT) program at Western Kentucky University.

There is a need to provide additional educational opportunities for physical therapy to meet the demand for increased physical therapy services. Currently, only two institutions in Kentucky offer physical therapy programs: The University of Kentucky and Bellarmine University. Data from the Bureau of Labor Statistics show a need for 960 new PT positions in Kentucky by 2012. Kentucky Hospital Association 2009 Workforce Shortage Survey reports a 10% vacancy rate that has not changed in the last five years. With only two universities graduating approximately 100 students per year, the Commonwealth of Kentucky will not be able to meet the critical shortage of physical therapists.

As a Health Care Provider we personally experience difficulties in finding quality physical therapists in our area.

I urge you to support the implementing DPT at WKU. A physical therapy program at WKU will address the needs in western Kentucky and the Commonwealth. I look forward to your reply.

Sincerely,

Chris Minnich, Administrator

CM:gw

NHC

HEALTHCARE

March 3, 2010

Dr. Gary Ransdell, President
Western Kentucky University
1906 College Heights Boulevard
Wetherby Administration Building
Bowling Green, KY 42101



President Ransdell:

I am writing to request your support for implementing a doctorate in physical therapy (DPT) program at Western Kentucky University.

There is a need to provide additional educational opportunities for physical therapy to meet the demand for increased physical therapy services. Currently, only two institutions in Kentucky offer physical therapy programs: The University of Kentucky and Bellarmine University. I personally know applicants who have applied for these programs and have had to wait years for admission. Data from the Bureau of Labor Statistics show a need for 960 new PT positions in Kentucky by 2012. Kentucky Hospital Association 2009 Workforce Shortage Survey reports a 10% vacancy rate that has not changed in the last five years. With only two universities graduating approximately 100 students per year, the Commonwealth of Kentucky will not be able to meet the critical shortage of physical therapists.

My company is very supportive of a physical therapy program because it is vital to improving the quality of life for many of our 206 residents. We will agree to tuition reimbursement for prospective employees or any of our current employees that should get into this program. We are currently staffing our rehabilitation department with out of state contracts. NHC of Glasgow will provide clinical affiliations for students.

I urge you to support the implementing DPT at WKU. A physical therapy program at WKU will address the needs in western Kentucky and the Commonwealth. I look forward to your reply.

Sincerely,

A handwritten signature in blue ink that reads "Emogene C. Stephens".

Emogene C. Stephens,
Administrator



METCALFE HEALTH CARE CENTER

P.O. BOX 115

EDMONTON, KY 42129

PHONE 270-432-2921



Metcalfe Health Care Center
P.O. Box 115
Edmonton, KY 42129

2/26/10

Dr. Gary Ransdell
President
Western Kentucky University
1906 College Heights Blvd.
Wetherby Administration Building
Bowling Green, KY 42101

President Ransdell:

I am writing to request your support for implementing a doctorate in physical therapy (DPT) program at Western Kentucky University.

There is a need to provide additional educational opportunities for physical therapy to meet the demand for increased physical therapy services. Currently, only two institutions in Kentucky offer physical therapy programs: The University of Kentucky and Bellarmine University. Data from the Bureau of Labor Statistics show a need for 960 new PT positions in Kentucky by 2012. Kentucky Hospital Association 2009 Workforce Shortage Survey reports a 10% vacancy rate that has not changed in the last five years. With only two universities graduating approximately 100 students per year, the Commonwealth of Kentucky will not be able to meet the critical shortage of physical therapists.

Here, at Metcalfe Health Care Center, we have experienced this shortage firsthand. We struggle to find qualified staff to provide the physical therapy our residents require. Currently, we have two therapists who are considered "travelers". These persons travel to and live throughout the week in south central Kentucky, so as to provide us with physical therapy but then return to

their homes, elsewhere in the state, on the weekends. Obviously, recruiting from outside this area creates a financial burden for our facility. If Western Kentucky University were able to graduate their own students from a physical therapy program I feel we would be more likely to recruit persons who live here.

I urge you to support the implementing DPT at WKU. A physical therapy program at WKU will address the needs in western Kentucky and the Commonwealth. I look forward to your reply.

Sincerely,

A handwritten signature in cursive script that reads "Amy Wilson Neighbors". The signature is written in black ink and is positioned above the typed name.

Amy Wilson Neighbors
Administrator



MONROE HEALTH & REHABILITATION



Dr. Gary Ransdell

President

Western Kentucky University

1906 College Heights Blvd.

Wetherby Administration Building

Bowling Green, KY 42101

President Ransdell:

I am writing to request your support for implementing a doctorate in physical therapy (DPT) program at Western Kentucky University.

Currently I manage a nursing home in Tompkinsville Kentucky. During my administration at the facility we have had a difficult time hiring and retaining therapist and therapy assistants. Being from this small town I know that most of the high school students from Monroe County attend Western Kentucky University. Most students want to attend a college close to home. I too received my Bachelors Degree in Health Care Administration and Masters Degree in Business Administration at Western Kentucky University. If Western offered a therapy program then more people from this small community would go into the field.

Thank you for your attention in this matter.

Mitzy Payne Cook

Administrator

Monroe Health and Rehabilitation Center



Christian Care Communities

Since 1884



February 25, 2010

Dr. Gary Ransdell, President
Western Kentucky University
1906 College Heights Blvd
Wetherby Administration Building
Bowling Green, KY 42101

Dear President Ransdell:

I am writing to request your support for implementing a doctorate in physical therapy (DPT) program at Western Kentucky University.

Working in long term care, we have dealt with an increased demand for qualified therapists. In the past, if we needed someone to fill in during vacation time, it was not an issue to have that spot covered. More recently, this has become a challenge. We have also witnessed an increased request for six days a week therapy.

In addition, with the increased acuity of illnesses that we are witnessing with older adults, combined with longer life expectancies, there is a greater need for rehabilitation. Transitional care units in the area have become more popular, causing a greater need and demand for these qualified individuals. With only two universities graduating approximately 100 students per year, the Commonwealth of Kentucky will not be able to meet the critical shortage of physical therapists.

Please support implementing DPT at WKU. A physical therapy program at WKU will address the needs in western Kentucky and the Commonwealth.

Thank you and should you like to discuss this further, I can be reached at 270-796-6643 or Melanie.Eaton@ccc1884.org.

Sincerely,

Melanie D. Eaton, CNHA
Executive Director/Administrator

Compassionate Care for Older Adults

Village Manor • Christian Health Center
1800 Westen Street • Bowling Green, Kentucky 42104
Phone: (270) 796-6643 • Fax: (270) 796-6733
www.ChristianCareCommunities.org



The Medical Center

CAL
TURNER
extended care pavilion

February 23, 2010

Dr. Gary Ransdell
President
Western Kentucky University
1906 College Heights Blvd.
Wetherby Administration Building
Bowling Green, KY 42101

FEB 2010

Dear President Ransdell:

I am writing on behalf of The Medical Center at Scottsville to request your support for implementing a doctorate in physical therapy (DPT) program at Western Kentucky University (WKU).

There is a need to provide additional educational opportunities for physical therapy (PT) to meet the demand for increased physical therapy services. Currently, only two institutions in Kentucky offer physical therapy programs: The University of Kentucky and Bellarmine University. Data from the Bureau of Labor Statistics show a need for 960 new PT positions in Kentucky by 2012. Kentucky Hospital Association 2009 Workforce Shortage Survey reports a 10% vacancy rate that has not changed in the last five years. With only two universities graduating approximately 100 students per year, the Commonwealth of Kentucky will not be able to meet the critical shortage of physical therapists.

The Medical Center at Scottsville has a very good reputation for our rehab department. This is due, in part, to the quality services provided by our physical therapists. Any disruption to services as a result of staff vacancies significantly impacts our operations. Our facility has experienced the difficulty with recruiting because of the shortage of physical therapists.

I request that you support the implementation of a DPT program at WKU. A physical therapy program will not only address our needs, but the needs within our state. I feel confident that you will not have any trouble finding students who wish to pursue this as their career. I personally know of several students that are pursuing this degree and hoping that it would be available at WKU before they have to transfer.

Sincerely,

Eric A. Hagan
Vice President/Administrator



CUMBERLAND COUNTY HOSPITAL

P.O. Box 280, 299 Glasgow Rd. Burkesville, KY 42717 — 270-864-2511

February 16, 2010



Dr. Gary Ransdell
President
Western Kentucky University
1906 College Heights Blvd.
Wetherby Administration Building
Bowling Green, Kentucky 42101

President Ransdell:

I am writing to request your support for implementing a doctorate in physical therapy (DPT) program at Western Kentucky University.

There is a need to provide additional educational opportunities for physical therapy to meet the demand for increased physical therapy services. Currently, only two institutions in Kentucky offer physical therapy programs: The University of Kentucky and Bellarmine University. Data from the Bureau of Labor Statistics show a need for 960 new PT positions in Kentucky by 2012. Kentucky Hospital Association 2009 Workforce Shortage Survey reports a 10% vacancy rate that has not changed in the last five years. With only two universities graduating approximately 100 students per year, the Commonwealth of Kentucky will not be able to meet the critical shortage of physical therapist.

I urge you to support the implementing DPT at WKU. A physical therapy program at WKU will address the needs in western Kentucky and the Commonwealth. I look forward to your reply.

Sincerely,

Rick Neikirk
Chief Executive Officer

February 13, 2010

Dr. Gary Ransdell
President
Western Kentucky University
1906 College Heights Blvd.
Wetherby Administration Building
Bowling Green, KY 42101

Dear Dr. Ransdell:

I am writing to request your support for a doctorate in physical therapy (DPT) program at Western Kentucky University.

There is a demonstrated need to provide additional educational opportunities in physical therapy to meet the current and projected demand for these services. Currently, only two (2) institutions in Kentucky offer physical therapy programs: University of Kentucky and Bellarmine University. Data from the Bureau of Labor Statistics show a need for 960 new physical therapists in Kentucky by 2012. The Kentucky Hospital Association's 2009 Workforce Shortage Survey reports a 10% vacancy rate that has not changed in the past five (5) years. With only two (2) universities graduating approximately 100 students per year, the Commonwealth of Kentucky will not be able to meet the critical shortage of physical therapists.

I urge you to support the implementation of a DPT program at WKU. A physical therapy program at WKU will address the needs in western Kentucky and the Commonwealth.

Your leadership shepherding the approval of the DPT program is essential to its success.

Sincerely,



Eileen Nelson
CEO





LOURDES
February 12, 2010



1530 Lone Oak Road
Paducah, Kentucky
42003

270 • 444 • 2444
www.lourdes-pad.org

Dr. Gary Ransdell
President
Western Kentucky University
1906 College Heights Blvd.
Wetherby Administration Building
Bowling Green, KY 42101

Dear President Randall:

I am writing to request your support for implementing a doctorate in physical therapy (DPT) program at Western Kentucky University.

There is a need to provide additional educational opportunities for physical therapy to meet the demand for increased physical therapy services. Currently, only two institutions in Kentucky offer physical therapy programs: The University of Kentucky and Bellarmine University. Data from the Bureau of Labor Statistics shows a need for 960 new physical therapy positions in Kentucky by 2012. The Kentucky Hospital Association 2009 Workforce Shortage Survey reports a 10% vacancy rate that has not changed in the last five years. With only two universities graduating approximately 100 students per year, the Commonwealth of Kentucky will not be able to meet the critical shortage of physical therapists.

At Lourdes we continue to experience extreme difficulty in recruiting physical therapists to our facility. We have had several positions vacant for approximately one year now. In addition, we are accustomed to utilizing staffing agencies to assist us with this type of need on a temporary basis; however we are now finding that even the agencies cannot meet the demands for physical therapists. It is evident there is a shortage and it will continue to worsen as times goes on.

I urge you to support the implementation of DPT at WKU. A physical therapy program at WKU will address the needs in western Kentucky and the Commonwealth. I look forward to your reply.

Best Regards:

Steven S. Grinnell
President & CEO, Mercy Health Partners, KY

910 Wallace Avenue
Leitchfield, KY 42754
270.259.9400
270.259.9524 FAX



February 11, 2010

Dr. Gary Ransdell
President
Western Kentucky University
1906 College Heights Blvd.
Wetherby Administration Building
Bowling Green, KY 42101



Dear President Ransdell,

It has come to my attention that consideration is being given to implementing a doctorate in physical therapy (DPT) program at Western Kentucky University. Inasmuch, I am writing to request your support for this initiative.

Nowhere is the need for additional physical therapists more pronounced than in rural communities such as ours. Without a doubt, there is a need to provide additional educational opportunities for physical therapy to meet the demand for increased physical therapy services and address the shortage of therapist to provide these services. With only two institutions in Kentucky offering physical therapy programs: The University of Kentucky and Bellarmine University, the supply of physical therapists cannot possibly be increased fast enough to meet the needs of our service area. This is evidenced by the Kentucky Hospital Association 2009 Workforce Shortage Survey report which documents a 10% vacancy rate that has not changed in the last five years. Data from the Bureau of Labor Statistics show a need for 960 new PT positions in Kentucky by 2012. With only two universities graduating approximately 100 students per year, the Commonwealth of Kentucky will not be able to meet the critical shortage of physical therapist.

I strongly urge you to support the implementing this doctoral program at Western. A physical therapy program at WKU will address the needs in western Kentucky and the Commonwealth. I look forward to your reply.

Sincerely,

A handwritten signature in blue ink that reads "Stephen L. Meredith".

Stephen L. Meredith, CEO

SLMpb

Equal Opportunity Provider

Dr. Gary Ransdell
President
Western Kentucky University
1906 College Heights Blvd.
Wetherby Administration Building
Bowling Green, KY 42101



President Ransdell:

I am writing to request your support for implementing a doctorate in physical therapy (DPT) program at Western Kentucky University.

There is a need to provide additional educational opportunities for physical therapy to meet the demand for increased physical therapy services. Currently, only two institutions in Kentucky offer physical therapy programs: The University of Kentucky and Bellarmine University. Data from the Bureau of Labor Statistics show a need for 960 new PT positions in Kentucky by 2012. Kentucky Hospital Association 2009 Workforce Shortage Survey reports a 10% vacancy rate that has not changed in the last five years. With only two universities graduating approximately 100 students per year, the Commonwealth of Kentucky will not be able to meet the critical shortage of physical therapists.

As I pen this letter, we currently have 2 full time PT positions open and other part time PT positions available. Some of these positions have been open for months. In the past we have been fortunate enough during slow periods at our sister hospitals across the nation, specifically in California, to temporarily transfer physical therapists for short-term assignments to fill our void. While this is helpful in the short term, it certainly is not a long term solution and not an option that everyone has. Access to an additional 30-50 physical therapists per year graduating from WKU would greatly increase our ability to fill these positions and ultimately to serve more patients needing physical therapy services in the South Central Kentucky area.

I personally, and Southern Kentucky Rehab Hospital corporately strongly urge you to support and pursue a DPT program at Western Kentucky University. A physical therapy program at WKU will help to address the needs in Western Kentucky and the Commonwealth. I look forward to your reply.

Sincerely,

A handwritten signature in blue ink that reads "Stuart Locke CEO".

Stuart Locke, CEO

Southern Kentucky Rehabilitation Hospital



P. O. Box 386
Marion, KY 42064-0386
270-965-5281
FAX 270-965-1061

"Caring for the Community"

February 9, 2010

Dr. Gary Ransdell, President
Western Kentucky University
1906 College Heights Blvd.
Wetherby Administration Building
Bowling Green, KY 42101



President Ransdell:

Please accept this as unswerving support for the new Physical Therapist program as proposed for Western Kentucky University in Paducah.

Our hospital based Physical Therapy, Restoration Therapy, Out-Patient Physical Therapy Clinics and our new Cardiovascular Rehabilitation Programs are just small examples of utilization of similar programs that will appreciate in all our healthcare facilities, and for all our community patients. This addition to local academic excellence is past due.

There is a need to provide additional educational opportunities for physical therapy to meet the demand for increased physical therapy services. Currently, only two institutions in Kentucky offer physical therapy programs: The University of Kentucky and Bellarmine University. Data from the Bureau of Labor Statistics show a need for 960 new PT positions in Kentucky by 2012. Kentucky Hospital Association 2009 Workforce Shortage Survey reports a 10% vacancy rate that has not changed in the last five years. With only two universities graduating approximately 100 students per year, the Commonwealth of Kentucky will not be able to meet the critical shortage of physical therapists.

As you review this Doctorate in Physical Therapy program, please consider this as one very small step forward in alleviating the current and the future vacancies in healthcare positions.

Please contact me at your discretion for any questions you might have in this very positive decision, for all our sakes.

Sincerely,

A handwritten signature in black ink, appearing to read 'Carl J. Christensen', written over a horizontal line.

Carl J. (Jim) Christensen
Chief Executive Officer

CJC/sd



February 9, 2010

Dr. Gary Ransdell
President
Western Kentucky University
1906 College Heights Blvd.
Wetherby Administration Building
Bowling Green, KY 42101



President Ransdell:

I am writing to request your support for implementing a doctorate in physical therapy (DPT) program at Western Kentucky University.

There is a need to provide additional educational opportunities for physical therapy to meet the demand for increased physical therapy services. Currently, only two institutions in Kentucky offer physical therapy programs: The University of Kentucky and Bellarmine University. Data from the Bureau of Labor Statistics show a need for 960 new PT positions in Kentucky by 2012. Kentucky Hospital Association 2009 Workforce Shortage Survey reports a 10% vacancy rate that has not changed in the last five years. With only two universities graduating approximately 100 students per year, the Commonwealth of Kentucky will not be able to meet the critical shortage of physical therapists.

I strongly urge you to support the implementation of a DPT Program at WKU. From the perspective of a hospital administrator, it is increasingly difficult to recruit and retain Physical Therapists to serve the needs of our south western Kentucky communities. I can think of no better solution to resolve this impending shortage than by "growing our own" at WKU. Please know that all graduates would be highly sought after not only in Kentucky, but throughout the country.

Please let me know if I can be of further assistance.

Sincerely,

A handwritten signature in black ink that reads "William Haugh".

William Haugh
Chief Executive Officer

February 8, 2010

Dr. Gary Ransdell, President
Western Kentucky University
1906 College Heights Blvd.
Wetherby Administration Building
Bowling Green, KY 42101

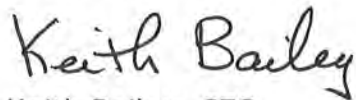
Dear President Ransdell:

I am writing to request your support for implementing a doctorate in physical therapy (DPT) program at Western Kentucky University.

There is a need to provide additional educational opportunities for physical therapy to meet the demand for increased physical therapy services. Currently, only two institutions in Kentucky offer physical therapy programs: The University of Kentucky and Bellarmine University. Data from the Bureau of Labor Statistics show a need for 960 new PT positions in Kentucky by 2012. Kentucky Hospital Association 2009 Workforce Shortage Survey reports a 10% vacancy rate that has not changed in the last five years. With only two universities graduating approximately 100 students per year, the Commonwealth of Kentucky will not be able to meet the critical shortage of physical therapists.

I urge you to support implementing the doctorate in physical therapy (DPI) program at Western Kentucky University. A physical therapy program at Western Kentucky University will address the needs in western Kentucky and the Commonwealth.

Sincerely,



Keith Bailey, CEO

/hm



HARDIN MEMORIAL HOSPITAL
Elizabethtown, Kentucky 42701



February 8, 2010

Dr. Gary Ransdell
President
Western Kentucky University
1906 College Heights Blvd.
Wetherby Administration Building
Bowling Green, KY 42101

Dear Dr. Ransdell:

I am writing to request your support for a doctorate in physical therapy (DPT) program at Western Kentucky University.

There is a demonstrated need to provide additional educational opportunities in physical therapy to meet the current and projected demand for these services. Currently, only two (2) institutions in Kentucky offer physical therapy programs: University of Kentucky and Bellarmine University. Data from the Bureau of Labor Statistics show a need for 960 new physical therapists in Kentucky by 2012. The Kentucky Hospital Association's 2009 Workforce Shortage Survey reports a 10% vacancy rate that has not changed in the past five (5) years. With only two (2) universities graduating approximately 100 students per year, the Commonwealth of Kentucky will not be able to meet the critical shortage of physical therapists.

I urge you to support the implementation of a DPT program at WKU. A physical therapy program at WKU will address the needs in western Kentucky and the Commonwealth.

Your leadership shepherding the approval of the DPT program is essential to its success.

Sincerely,

A handwritten signature in blue ink that reads 'David L. Gray'.
David L. Gray
President



Clara M. Sumner, FACHE
SENIOR VICE PRESIDENT AND
CHIEF EXECUTIVE OFFICER

February 8, 2010

Dr. Gary Ransdell
President
Western Kentucky University
1906 College Heights Blvd.
Wetherby Administration Building
Bowling Green, Kentucky 42101



President Ransdell:

I am asking for your support in implementing a doctorate in physical therapy (DPT) program at Western Kentucky University.

Currently there are only two institutions in Kentucky that offer physical therapy programs: Bellarmine University and The University of Kentucky. There is a need to provide additional educational opportunities for physical therapy to meet the continued demand locally and across the country. The Bureau of Labor Statistics data shows that by 2012 there will be a need for 960 new PT positions in Kentucky. With only two universities graduating approximately 100 students per year, the Commonwealth of Kentucky will not be able to meet the critical shortage of therapist.

I have firsthand knowledge of this workforce shortage. My entire career has been in the healthcare field with Physical Therapist being one of the most challenging to recruit. There is an exorbitant amount of money spent in recruitment and retention therapist. We have had unfilled vacancies for as long as 6 -12 months. This is also supported by the Kentucky Hospital Association 2009 Workforce Shortage Survey which shows a 10% vacancy rate that has not changed in the last five years.

Sincerely,

Clara M. Sumner, FACHE
Sr. Vice President and
Chief Executive Officer

February 8, 2010

Dr. Gary Ransdell
President
Western Kentucky University
1906 College Heights Blvd.
Wetherby Administration Building
Bowling Green, KY 42101



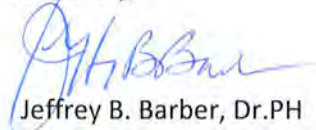
President Ransdell:

As a member of the Kentucky Hospital Association's Board of Director and Executive Committee and as President and Chief Executive Officer of Owensboro Medical Health System, I am writing to provide my support for implementing a doctorate in physical therapy (DPT) program at Western Kentucky University.

There is a need to provide additional educational opportunities for physical therapy to meet the demand for increased physical therapy services. Currently, only two institutions in Kentucky offer physical therapy programs: The University of Kentucky and Bellarmine University. Data from the Bureau of Labor Statistics show a need for 960 new PT positions in Kentucky by 2012. Kentucky Hospital Association 2009 Workforce Shortage Survey reports a 10% vacancy rate that has not changed in the last 5 years. With only two universities graduating approximately 100 students per year, the Commonwealth of Kentucky will not be able to meet the critical shortage of physical therapists.

I urge you to support the implementing DPT at WKU. A physical therapy program at WKU will address the needs in Western Kentucky and the Commonwealth. I look forward to your reply.

Sincerely,


Jeffrey B. Barber, Dr.PH



Christian Care Communities

Since 1884



February 5, 2010

Dr. Gary Ransdell
President
Western Kentucky University
1906 College Heights Blvd.
Wetherby Administration Building
Bowling Green, KY 42101

President Ransdell:

I am writing to request your support for initiating a doctoral level program in physical therapy at Western Kentucky University.

There is a profound and growing need to provide additional educational opportunities to prepare enough physical therapists to meet the anticipated demand for increased physical therapy services in the Commonwealth, as well as nationally.

The Kentucky Hospital Association's 2009 Workforce Shortage Survey reports a 10% vacancy rate, which has not changed in the last five years. Data from the Bureau of Labor Statistics indicate the need for 960 new PT positions in Kentucky by 2012.

Currently, only two institutions in Kentucky offer physical therapy programs: The University of Kentucky and Bellarmine University. Together, those two programs graduate approximately 100 students per year. At this pace, Kentucky will not be able to meet the critical shortage of physical therapists we already have, much less the expected growth in that need over the next decade.

I urge you to support the development of a program awarding the DPT degree at WKU. I trust you'll agree it would be consistent with the institutional mission and its commitment to the region, as well as to the future of the Commonwealth.

Sincerely yours,

Keith R. Knapp, Ph.D., C.N.H.A., C.N.A.
President and Chief Executive Officer

February 4, 2010

Dr. Gary Ransdell
President
Western Kentucky University
1906 College Heights Blvd.
Wetherby Administration Building
Bowling Green, KY 42101

Dear President Ransdell:

I am writing to request your support for implementing a doctorate in physical therapy (DPT) program at Western Kentucky University.

There is a need to provide additional educational opportunities for physical therapy to meet the demand for increased physical therapy services. Currently, only two institutions in Kentucky offer physical therapy programs: The University of Kentucky and Bellarmine University. Data from the Bureau of Labor Statistics show a need for 960 new PT positions in Kentucky by 2012. Kentucky Hospital Association 2009 Workforce Shortage Survey reports a 10% vacancy rate that has not changed in the last five years. With only two universities graduating approximately 100 students per year, the Commonwealth of Kentucky will not be able to meet the critical shortage of physical therapists.

We have recently experienced an increased need at Greenview Hospital for more PTs with the growing amount of orthopaedic cases we have performed and expect to perform over the coming years. A DPT program would further complement the goals and vision we have for Greenview in meeting our local healthcare needs. Please don't hesitate to call me or have someone contact me should you have any specific questions. Thanks for all that you do at WKU to support our healthcare community by providing and producing talented graduates who make up a majority of our professional workforce.

I urge you to support implementing DPT at WKU. A physical therapy program at WKU will address the needs in western Kentucky and the Commonwealth. I look forward to your reply.

Sincerely,



Mark A. Marsh
CEO

MM:khs



**METHODIST
HOSPITAL**

February 4, 2010

Dr. Gary Ransdell
President
Western Kentucky University
1906 College Heights Blvd.
Wetherby Administration Building
Bowling Green, KY 42101



President Ransdell:

I am writing to request your support for implementing a Doctorate in Physical Therapy (DPT) program at Western Kentucky University (WKU).

There is a need to provide additional educational opportunities for physical therapy to meet the demand for increased physical therapy services. Currently, only two institutions in Kentucky offer Physical Therapy programs: The University of Kentucky and Bellarmine University. Data from the Bureau of Labor Statistics show a need for 960 new Physical Therapist positions in Kentucky by 2012. The Kentucky Hospital Association 2009 Workforce Shortage Survey reports a 10% vacancy rate that has not changed in the last five years. With only two universities graduating approximately 100 students per year, the Commonwealth of Kentucky will not be able to meet the critical shortage of Physical Therapists.

I believe that as the baby boomers continue to have active lifestyles, and as they age, the demand for Physical Therapy services will continue to grow at a rapid pace.

I urge you to support implementing a DPT program at Western Kentucky University. A Physical Therapy program at WKU will address the needs in western Kentucky and the Commonwealth. I look forward to your reply.

Sincerely,



Bruce D. Begley
Chief Executive Officer



Muhlenberg Community Hospital

P.O. Box 387 • Greenville, Kentucky 42345 • Telephone (270) 338-8000

February 4, 2010

Dr. Gary Ransdell, President
Western Kentucky University
1906 College Heights Blvd.
Wetherby Administration Building
Bowling Green, KY 42101



Dear President Ransdell:

I am writing to request your support for implementing a doctorate in physical therapy (DPT) program at Western Kentucky University.

There is a great need to provide additional educational opportunities for physical therapy to meet the demand for increased physical therapy services. Currently, only two institutions in Kentucky offer physical therapy programs: The University of Kentucky in Lexington, 175 miles from Greenville; and Bellarmine University, 130 miles from Greenville. Data from the Bureau of Labor Statistics shows a need for 960 new PT positions in Kentucky by 2012. A Kentucky Hospital Association 2009 Workforce Shortage Survey reports a 10% vacancy rate that has not changed in the last five years. With only two universities in Kentucky graduating approximately 100 students per year, the Commonwealth of Kentucky will not be able to meet the critical shortage of physical therapists.

For many years Muhlenberg County residents have moved to Lexington, Louisville, or Evansville, Indiana to attend a physical therapy training program. A good number of those citizens choose to remain there upon graduation to make their home. Having a DPT training program so close to Muhlenberg County will surely aid us in recruitment. Its close proximity will also allow Muhlenberg Community Hospital to serve as a clinical training site for the students, a benefit to the students, our patients, and our current staff.

I urge you to support implementing DPT at Western Kentucky University. A physical therapy program at WKU will address the needs in western Kentucky and the Commonwealth. I look forward to your reply.

Sincerely,

A handwritten signature in cursive script that reads 'Tracy P. Byers'.

Tracy P. Byers, RACHE
Chief Executive Officer

lgl

"Caring for you, caring about you"

T. J. Samson Community Hospital

1301 North Race Street

Glasgow, Kentucky 42141-3483

270-651-4444

BILL KINDRED

Chief Executive Officer

DIRECTORS

WALTER WINN DAVIS

ELLEN BALE

KAREN M. SMALL, M.D.

MIKE BRYANT

CHRIS LAWRENCE

OFFICERS

HENRY ROYSE
Chairman

DAN FOUTCH
Vice Chairman

ROLLIN "BUDDY" UNDERWOOD
Secretary

FOLLIS CROWE, III
Treasurer

FEB 2010

February 3, 2010

Dr. Gary Ransdell, President
Western Kentucky University
1906 College Heights Blvd.
Wetherby Administration Building
Bowling Green, KY 42101

Dear Dr. Ransdell:

The purpose of my letter is to request your support for implementing a doctorate in physical therapy (DPT) program at Western Kentucky University.

There is a need to provide additional educational opportunities for physical therapy to meet the demand for increased physical therapy services. Currently, the University of Kentucky and Bellarmine University are the only two institutions in Kentucky to offer physical therapy programs.

Data from the Bureau of Labor Statistics show a need for 960 new PT positions in Kentucky by 2012. Kentucky Hospital Association 2009 Workforce Shortage Survey reports a 10% vacancy rate that has not changed in the last five years. With only two universities graduating approximately 100 students per year, the Commonwealth of Kentucky will not be able to meet the critical shortage of physical therapists.

I urge you to support implementing DPT at Western Kentucky University. A physical therapy program at WKU will address the needs in western Kentucky and the Commonwealth.

I look forward to your reply.

Sincerely yours,


Bill Kindred, C.E.O.

T.J. Samson Community Hospital



A PLANIFREE AFFILIATE



254 Main Street • P.O. Box 312
Cadiz, Kentucky 42211
270-522-3215
Fax 270-522-6974

February 3, 2010

Dr. Gary Ransdell, President
Western Kentucky University
1906 College Heights Blvd.
Wetherby Administration Building
Bowling Green, KY 42101

President Ransdell:

I am writing to request your support for implementing a doctorate in physical therapy (DPT) program at Western Kentucky University.

There is a real need to provide this additional opportunity for physical therapy to meet the demand for increased physical therapy services. Currently, only two institutions in Kentucky offer physical therapy programs: University of Kentucky and Bellarmine University. Data from the Bureau of Labor Statistics show a need for 960 new PT positions in Kentucky by 2010. The Kentucky Hospital Association's 2009 Workforce Shortage Survey revealed a 10% vacancy rate that has not changed in the last five years. With only two universities graduating approximately 100 students per year, the Commonwealth of Kentucky will not be able to meet the critical shortage of physical therapists.

Over the past 18 months, Trigg County Hospital has been trying to fill a fulltime physical therapist position. After using the services of recruiting firms, several ads at the state and regional level, we have finally filled the position. Since our difficulty in filling this position, we are continuing to recruit another PT, in case it requires the same amount of time and effort to be successful. Because of the shortage in staffing, patients have to wait for needed services for weeks, sometimes having to travel a great distance. This can be expensive, and many times, inconvenient for patients, particularly the elderly, who need physical rehab services.

I urge you to support the implementation of a DPT program at WKU. As a former graduate of WKU, I know the quality of education that is produced there and I am certain the level of education and clinical preparation for this program will be superior. A physical therapy program at WKU will address the needs in western Kentucky and will assist the entire Commonwealth in providing an ample supply of needed healthcare workers to meet the demand. I look forward to your reply.

Sincerely,

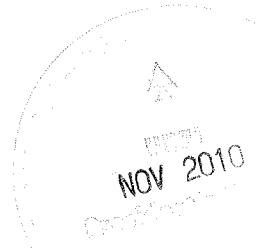
Alisa Coleman, CEO



Appalachian Regional Healthcare
The Medical Centers of the Mountains

October 27, 2010

Dr. Gary Ransdell
President
Western Kentucky University
1906 College Heights Blvd.
Wetherby Administration Building
Bowling Green, KY 42101



President Ransdell:

I am writing to request your support for implementing a doctorate in physical therapy (DPT) program at Western Kentucky University.

There is a need to provide additional educational opportunities for physical therapy to meet the demand for increased physical therapy services. Currently, only two institutions in Kentucky offer physical therapy programs: The University of Kentucky and Bellarmine University. Data from the Bureau of Labor Statistics show a need for 960 new PT positions in Kentucky by 2012. Kentucky Hospital Association 2009 Workforce Shortage Survey reports a 10% vacancy rate that has not changed in the last five years. With only two universities graduating approximately 100 students per year, the Commonwealth of Kentucky will not be able to meet the critical shortage of physical therapists.

We are aware of this shortage at Whitesburg ARH Hospital because presently we are recruiting for a Rehab Director at this time and have not been successful. We currently have 2 physical therapists staffed as well as physical therapist assistants.

I urge you to support the implementing DPT at WKY. A physical therapy program at WKU will address the needs in Western Kentucky and the Commonwealth. I look forward to your reply.

Sincerely,

Dena C. Sparkman, MHA, FACHE
Community CEO

*Whitesburg ARH Hospital
240 Hospital Rd.
Whitesburg KY 41858
(606)633.3500*



LAKE CUMBERLAND Regional Hospital

Leading the way to better healthcare.

11/8/10

Dr. Gary Ransdell
President
Western Kentucky University
1906 College Heights Blvd.
Wetherby Administration Building
Bowling Green, KY 42101

President Ransdell:

As Chief Operating Officer of Lake Cumberland Regional Hospital and as the administrator responsible for the Physical Therapy and Rehabilitation Department within our hospital, I gladly write this letter in support of the development of a doctorate in physical therapy (DPT) program at Western Kentucky University.

Rural areas of our state have long been challenged with insufficient availability of qualified clinicians for our hospitals, home health settings, outpatient programs, and long term care facilities. Even in urban areas there are significant opportunities with providing the appropriate levels of PT care for Kentucky's residents. Physical therapy coverage for our state and access to that care are problems that cannot be overstated. The creation of a doctorate program at Western Kentucky University would have a very positive impact on this problem and do much to expand the quality of healthcare services for our state's residents.

While many in this profession may choose an urban setting as it may offer greater clinical and professional diversity, the opportunity to work in a rural setting also has inherent advantages of autonomous practice and variable case loads. The rural areas of Kentucky deserve this consideration, and providing a much-needed additional educational path toward growing the number of properly trained physical therapists will help ease this problem in our state. We at Lake Cumberland Regional Hospital have many times faced unmet needs and lingering open positions in this field due to the lack of supply of qualified candidates.

I thank you for your support in this endeavor and please advise if we can help further.

Sincerely,



Robert Parker
Chief Operating Officer
Lake Cumberland Regional Hospital
Somerset, KY 42503
(606) 451 3907





ARH
Middlesboro ARH Hospital

October 22, 2010



Dr. Gary Ransdell, President
Western Kentucky University
1906 College Heights Blvd #11038
Wetherby Administration Building
Bowling Green, KY 42101

Dear Dr. Ransdell:

The purpose of this communication is to request support for implementing a doctorate in physical therapy (DPT) program at Western Kentucky University.

According to studies conducted by the Kentucky Hospital Association and the South Central Kentucky Area Health Education Center there were more than 100 vacant physical therapy positions in western Kentucky in 2009 and data from the Bureau of Labor Statistics show that more than 960 physical therapists will be needed in Kentucky by 2012. Currently there are only two physical therapy program offered in Kentucky graduating approximately 100 students per year to meet the increasing needs.

Therefore, I urge you to support the implementing DPT at WKU in order to meet the demand for increased physical therapy services in western Kentucky and the Commonwealth.

Sincerely,

A handwritten signature in black ink that reads "Michael A. Slusher".

Michael A. Slusher
Community CEO

Middlesboro ARH Hospital
P.O. Box 340
Middlesboro, KY 40965

Walter E. May
President/CEO



October 21, 2010

NOV 2010

Dr. Gary Ransdell, President
Western Kentucky University
1906 College Heights Blvd.
Wetherby Administration Building
Bowling Green, KY 42101

Dear President Ransdell:

This letter is to serve as Pikeville Medical Center's support in developing a physical therapy (DPT) program at Western Kentucky University. We at Pikeville Medical Center are always in need of physical therapists and additional educational opportunities for a physical therapy program at WKU will address the needs in our area and the Commonwealth.

Please let me know if there is anything further that I can assist you in achieving this goal.

Sincerely,

A handwritten signature in black ink that reads "Walter E. May".

Walter E. May
President/CEO

WEM: dh

"The Region's Medical Leader"

911 Bypass Road • Pikeville, KY 41501 • 606-218-3500
www.pikevillehospital.org

PHYSICAL THERAPY at WKU
Proposals and Pledges
October 26, 2010

DONORS	PLEDGE / STATUS	AREA OF SUPPORT
Tom & Portia Pennington	\$150K paid in full	\$150K to fund salaries of director and clinical manager
Kentucky Hospital Research and Education Foundation	\$50K paid and \$50K pledged for September 2010 and 2011	\$150,000 to fund salaries
RehabCare	\$250K gift agreement to be paid over 5 years	\$250K to fund start-up costs for PT program
Vibra Healthcare	\$100,000 over 5 years	

Total **\$650,000**

Additional pledges are under discussion.

Additional gifts in kind in the form of equipment are pending.

**WKU Doctorate of Physical Therapy
Steering Committee Members**

NAME	BUSINESS ADDRESS	E-MAIL ADDRESS	PHONE NUMBER
Neil Thornbury, OT	TJ Samson Community Hospital 1301 North Race Street Glasgow, KY 42141	Nthornbury@TJSamson.org	270-651-4292
Lucy Juett	Project Director Southcentral AHEC Academic Complex 405 Western Kentucky University Bowling Green, KY 42101	lucy.juett@wku.edu	270-745-3325
Dr. John Bonaguro	Dean of Health & Human Services Academic Complex 205 Western Kentucky University Bowling Green, KY 42101	john.bonaguro@wku.edu	270-745-7003
Ron Wilson	Director of Development, CHHS Wetherby Admin. Bldg. 119 Western Kentucky University Bowling Green, KY 42101	ron.wilson@wku.edu	270-745-8727
Bruce Mauzy, PT	Director of Rehab Services Owensboro Medical Health System 811 E. Parrish Avenue Owensboro, KY 42303	Bmauzy@omhs.org	270-688-4808
Mike Muscarella, PT	Director of Rehab Services Western Baptist Hospital 2501 Kentucky Avenue Paducah, KY 42003	mmuscarella@bhsi.com	270-575-2722
Gail Pritchett, PT	Inpatient Coordinator Trover Clinic 200 Clinic Drive Madisonville, KY 42431	gpritch@trover.org	270-825-5598
Stephen Huntsman, PT	Director of Clinical Services Integrity Rehab Group 1945 Scottsville Rd., B-2, PMB 356 Bowling Green, KY 42101	stephen.huntsman@irg.net	270-791-1950
Tom Pennington, PT	CEO Integrity Rehab Group 1945 Scottsville Rd., B-2, PMB 356 Bowling Green, KY 42101	tom@irg.net	270-320-8002
Susan Gates, MPT	Rehab Services Director 1211 Old Main Street Ohio County Hospital Hartford, KY 42347-1619	soozin23@msn.com	270-298-5426
Updated 1/26/2011			

**WKU Doctorate of Physical Therapy
Steering Committee Members**

NAME	BUSINESS ADDRESS	E-MAIL ADDRESS	PHONE NUMBER
Linda Pillow, PT	Rehab Services Director Graves Gilbert Clinic Bowling Green, KY 42101	pillowl@ggclinic.com	
Western Kentucky University Representatives			
Dr. Gary Ransdell	President Office of the President Wetherby Administration Building Western Kentucky University 1906 College Heights Blvd #1004 Bowling Green, KY 42101-1004	gary.ransdell@wku.edu	270-745-5394
Robbin Taylor	Vice President for Public Affairs Western Kentucky University Office of Public Affairs WAB 150 1906 College Heights Blvd #1004 Bowling Green, KY 42101-1004	robbin.taylor@wku.edu	270-745-4586
Jennifer Smith	Director, Government & Community Relations Office of Public Affairs WAB 150 1906 College Heights Blvd #1004 Bowling Green, KY 42101-1004	jennifer.breiwsmith@wku.edu	270-745-6824
Kentucky Hospital Association Representative			
Sarah Smith Nicholson	Vice President Government Relations Kentucky Hospital Association 2501 Nelson Miller Parkway Louisville, KY 40223	Snicholson@kyha.com	502-426-6220