

Faculty Work Life Survey 2009 versus 2012

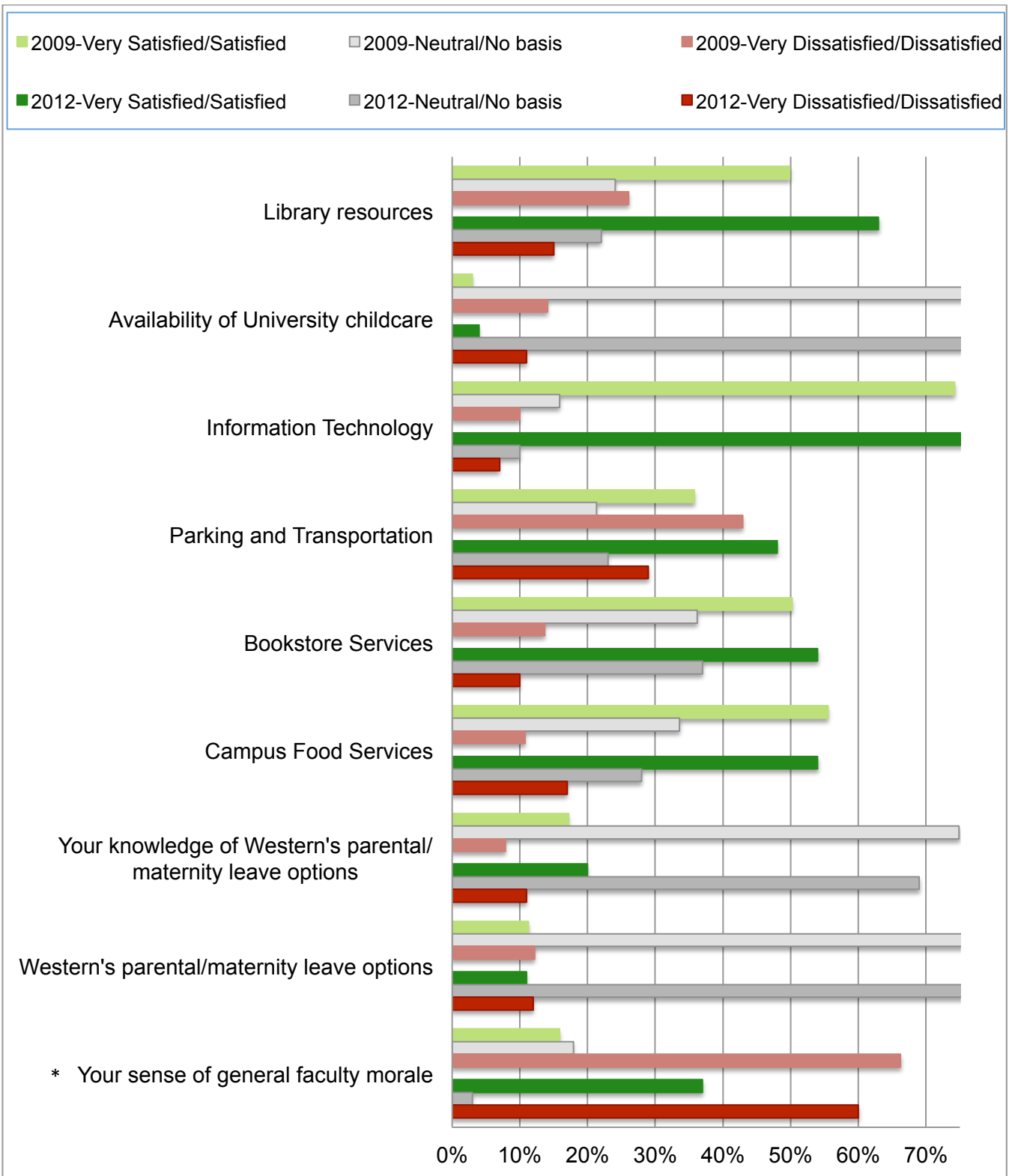
Sample Demographics

Do you hold a tenure track position?	2009	2012
Yes	79.6%	80%
No	20.4%	20%

Your rank	2009	2012
Instructor	17%	19%
Assistant Professor	31%	26%
Associate Professor	30%	34%
Full Professor	21%	22%

Your college:	2009	2012
Bowling Green Community College	5%	
College of Education and Behavioral Sciences	17%	16%
College of Health and Human Services	18%	20%
Gordon Ford College of Business	7%	7%
Ogden College of Science and Engineering	19%	18%
Potter College of Arts, Humanities, and Social Sciences	28%	24%
University College	2%	10%
University Libraries	3%	5%

Your responsibilities are primarily:		
	2009	2012
Teaching	88.40%	88
Administrative	11.60%	12



**"Neutral" was not an option in 2012

2009-Strongly Agree/Agree

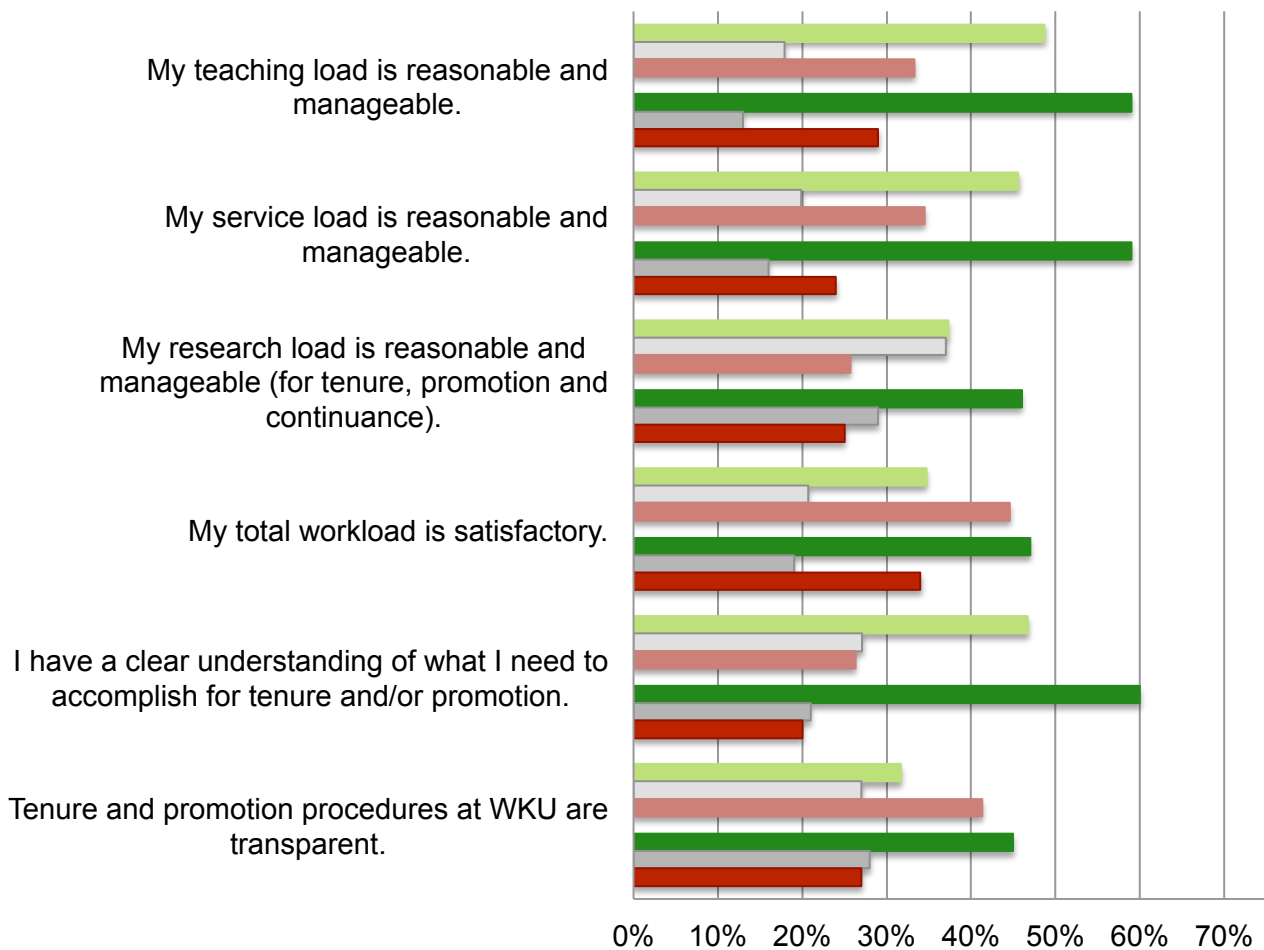
2009-Neutral/No basis

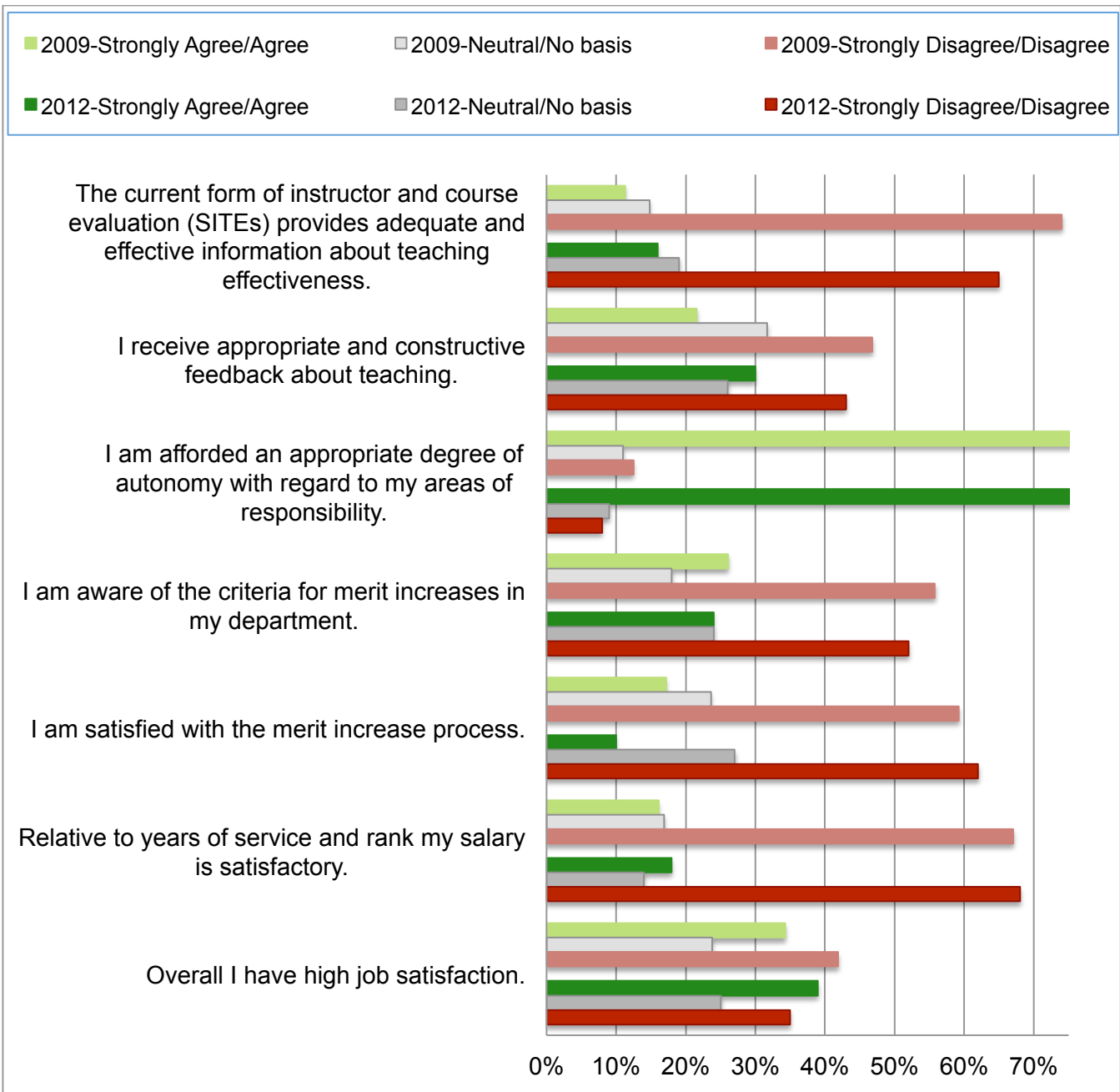
2009-Strongly Disagree/Disagree

2012-Strongly Agree/Agree

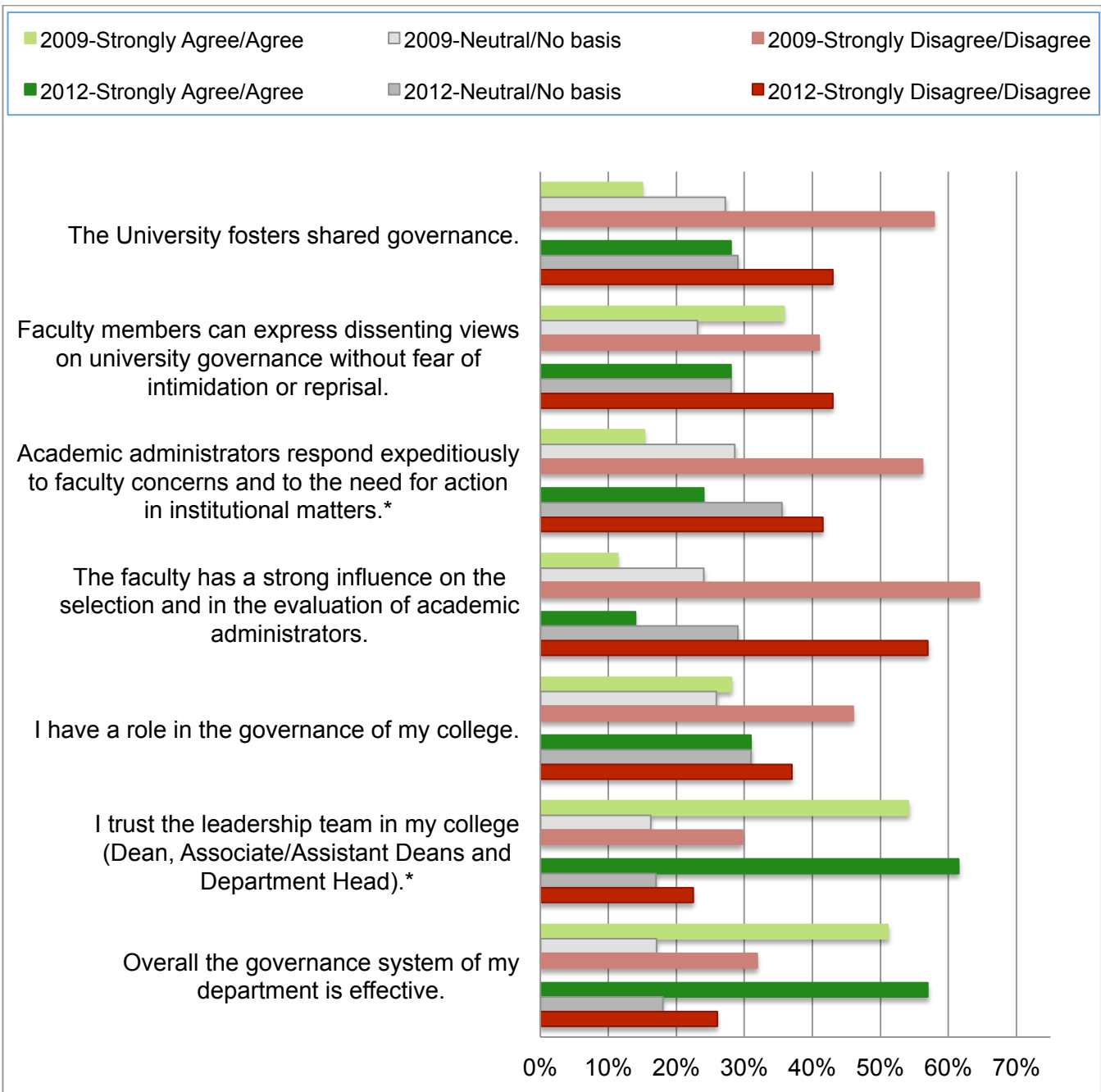
2012-Neutral/No basis

2012-Strongly Disagree/Disagree



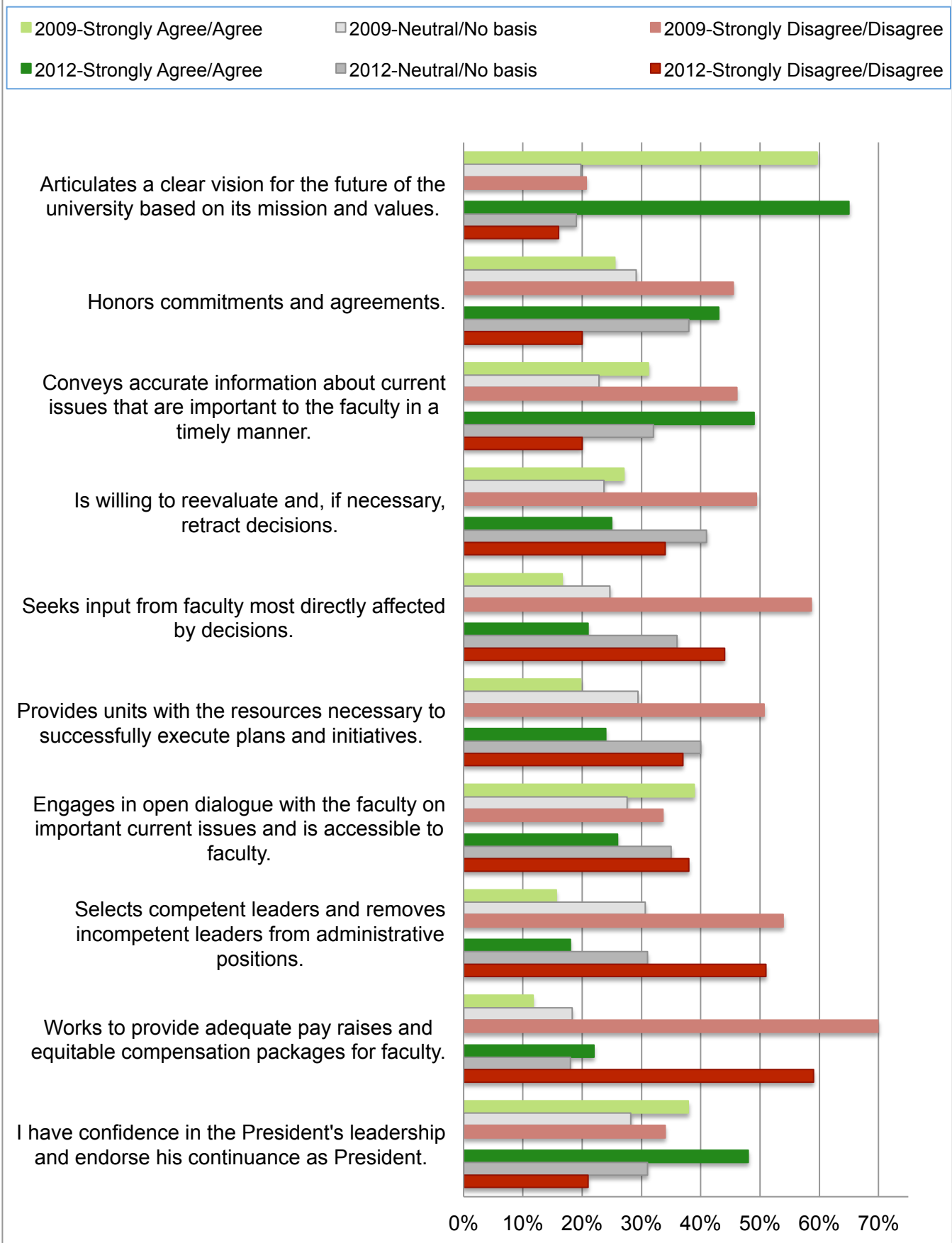


	2009	2012
On average, how many credit hours do you teach per year?	19.8	22.0
Per week, about how many hours do you devote to teaching, including preparation, grading, office hours?	31	34.8
Per week, about how many hours do you devote to service (departmental, college or university)?	10.6	11.5
Per week, about how many hours do you devote to research/scholarship?	9	6.7



*These items were separated into two separate questions in 2012.

The statements below are about President Gary Ransdell's performance



The statements below are about the Provost's performance

